



Department  
of the  
Treasury

Internal  
Revenue  
Service

**Publication 929**  
Cat. No. 64349Y

# Tax Rules for Children and Dependents

For use in preparing  
**2006** Returns



**Get forms and other information  
faster and easier by:**

**Internet • [www.irs.gov](http://www.irs.gov)**

## Contents

<b>What's New</b> . . . . .	1
<b>Reminders</b> . . . . .	2
<b>Introduction</b> . . . . .	2
<b>Part 1. Rules for All Dependents</b> . . . . .	2
Filing Requirements . . . . .	3
Should a Return Be Filed Even If Not Required? . . . . .	4
Responsibility for Child's Return . . . . .	4
Standard Deduction . . . . .	5
Dependent's Own Exemption . . . . .	5
Withholding From Wages . . . . .	5
<b>Part 2. Tax on Investment Income of Child Under 18</b> . . . . .	6
Parent's Election To Report Child's Interest and Dividends . . . . .	6
Tax for Children Under Age 18 Who Have Investment Income of More Than \$1,700 . . . . .	10
<b>Glossary</b> . . . . .	23
<b>How To Get Tax Help</b> . . . . .	24
<b>Index</b> . . . . .	26

## What's New

**Filing requirements.** The amount of gross income that many dependents with earned income (wages, tips, etc.) can have during the year without having to file a return has increased. See *Filing Requirements* in *Part 1*.

**Standard deduction.** The standard deduction for many dependents with earned income (wages, tips, etc.) has increased. See *Standard Deduction* in *Part 1*.

**Investment income of child under age 18.** A child's investment income may be subject to tax at the parent's tax rate if the child is under age 18 (previously under age 14) at the end of the year. The amount of taxable investment income the child can have without it being subject to tax at the parent's rate has increased to \$1,700 (previously \$1,600). See *Part 2*.

**Alternative minimum tax.** The limit on the exemption amount for figuring the alternative minimum tax of a child filing Form 8615 has increased to the child's earned income plus \$6,050 (previously \$5,850). See *Alternative Minimum Tax* in *Part 2*.

**Foreign earned income exclusion.** If the child or parent claimed the foreign earned income exclusion or housing exclusion on Form 2555 or Form 2555-EZ, special rules apply when using Form 8615 and the Foreign Earned Income Tax Worksheet to figure the child's tax. See *Part 2*.

**Table 1. 2006 Filing Requirements for Dependents**

<p>If your parent (or someone else) can claim you as a dependent, use this table to see if you must file a return.</p> <p>See the definitions of “dependent,” “earned income,” and “unearned income” in the <i>Glossary</i>.</p>							
<p><b>Single dependents</b>—Were you <b>either</b> age 65 or older <b>or</b> blind?</p> <p><input type="checkbox"/> <b>No.</b> You must file a return if <b>any</b> of the following apply.</p> <ul style="list-style-type: none"> <li>• Your unearned income was over \$850.</li> <li>• Your earned income was over \$5,150.</li> <li>• Your gross income was more than the <b>larger</b> of: <ul style="list-style-type: none"> <li>• \$850, or</li> <li>• Your earned income (up to \$4,850) plus \$300.</li> </ul> </li> </ul> <p><input type="checkbox"/> <b>Yes.</b> You must file a return if any of the following apply.</p> <ul style="list-style-type: none"> <li>• Your unearned income was over \$2,100 (\$3,350 if 65 or over <b>and</b> blind),</li> <li>• Your earned income was over \$6,400 (\$7,650 if 65 or older <b>and</b> blind),</li> <li>• Your gross income was more than—</li> </ul> <table style="width: 100%; border: none;"> <tr> <td style="width: 50%;"><u>The larger of:</u></td> <td style="width: 10%; text-align: center;">PLUS</td> <td style="width: 40%;"><u>This amount:</u></td> </tr> <tr> <td> <ul style="list-style-type: none"> <li>• \$850, or</li> <li>• Your earned income (up to \$4,850) plus \$300</li> </ul> </td> <td></td> <td> <ul style="list-style-type: none"> <li>\$1,250 (\$2,500 if 65 or older <b>and</b> blind)</li> </ul> </td> </tr> </table>		<u>The larger of:</u>	PLUS	<u>This amount:</u>	<ul style="list-style-type: none"> <li>• \$850, or</li> <li>• Your earned income (up to \$4,850) plus \$300</li> </ul>		<ul style="list-style-type: none"> <li>\$1,250 (\$2,500 if 65 or older <b>and</b> blind)</li> </ul>
<u>The larger of:</u>	PLUS	<u>This amount:</u>					
<ul style="list-style-type: none"> <li>• \$850, or</li> <li>• Your earned income (up to \$4,850) plus \$300</li> </ul>		<ul style="list-style-type: none"> <li>\$1,250 (\$2,500 if 65 or older <b>and</b> blind)</li> </ul>					
<p><b>Married dependents</b>—Were you <b>either</b> age 65 or older <b>or</b> blind?</p> <p><input type="checkbox"/> <b>No.</b> You must file a return if <b>any</b> of the following apply.</p> <ul style="list-style-type: none"> <li>• Your gross income was at least \$5 and your spouse files a separate return and itemizes deductions.</li> <li>• Your unearned income was over \$850.</li> <li>• Your earned income was over \$5,150.</li> <li>• Your gross income was more than the <b>larger</b> of: <ul style="list-style-type: none"> <li>• \$850, or</li> <li>• Your earned income (up to \$4,850) plus \$300.</li> </ul> </li> </ul> <p><input type="checkbox"/> <b>Yes.</b> You must file a return if any of the following apply.</p> <ul style="list-style-type: none"> <li>• Your gross income was at least \$5 and your spouse files a separate return and itemizes deductions.</li> <li>• Your unearned income was over \$1,850 (\$2,850 if 65 or over <b>and</b> blind),</li> <li>• Your earned income was over \$6,150 (\$7,150 if 65 or older <b>and</b> blind),</li> <li>• Your gross income was more than—</li> </ul> <table style="width: 100%; border: none;"> <tr> <td style="width: 50%;"><u>The larger of:</u></td> <td style="width: 10%; text-align: center;">PLUS</td> <td style="width: 40%;"><u>This amount:</u></td> </tr> <tr> <td> <ul style="list-style-type: none"> <li>• \$850, or</li> <li>• Your earned income (up to \$4,850) plus \$300</li> </ul> </td> <td></td> <td> <ul style="list-style-type: none"> <li>\$1,000 (\$2,000 if 65 or older <b>and</b> blind)</li> </ul> </td> </tr> </table>		<u>The larger of:</u>	PLUS	<u>This amount:</u>	<ul style="list-style-type: none"> <li>• \$850, or</li> <li>• Your earned income (up to \$4,850) plus \$300</li> </ul>		<ul style="list-style-type: none"> <li>\$1,000 (\$2,000 if 65 or older <b>and</b> blind)</li> </ul>
<u>The larger of:</u>	PLUS	<u>This amount:</u>					
<ul style="list-style-type: none"> <li>• \$850, or</li> <li>• Your earned income (up to \$4,850) plus \$300</li> </ul>		<ul style="list-style-type: none"> <li>\$1,000 (\$2,000 if 65 or older <b>and</b> blind)</li> </ul>					

## Reminders

**Social security number (SSN).** Dependents who are required to file a tax return must have an SSN. To apply for an SSN, file Form SS-5 with the Social Security Administration. You can go to the website [www.socialsecurity.gov](http://www.socialsecurity.gov) for more information.

**Individual taxpayer identification number (ITIN).** The IRS will issue an ITIN to a nonresident or resident alien who does not have and is not eligible to get an SSN. To apply for an ITIN, file Form W-7, Application for IRS Individual Taxpayer Identification Number, with the IRS. It usually takes about 4 to 6 weeks to get an ITIN. The ITIN is entered wherever an SSN is requested on a tax return. If you are a nonresident alien applying for an ITIN to file a tax return, you generally must attach your original, completed return to Form W-7 to get an ITIN. If you are required to include another person’s SSN on your return and that person does not have and cannot get an SSN, enter that person’s ITIN.

An ITIN is for tax use only. It does not entitle you to social security benefits or change your employment or immigration status under U.S. law.

**Photographs of missing children.** The Internal Revenue Service is a proud partner with the National Center for Missing and Exploited Children. Photographs of missing children selected by the Center may appear in this publication on pages that would otherwise be blank. You can help bring these children home by looking at the photographs and calling 1-800-THE-LOST (1-800-843-5678) if you recognize a child.

## Introduction

*Part 1* of this publication explains the filing requirements and other tax information for individuals who can be claimed as a dependent on another person’s tax return.

*Part 2* explains how to report and figure the tax on certain investment income of children under age 18 (whether or not they can be claimed as dependents).

**Definitions.** Many of the terms used in this publication, such as “dependent,” “earned income,” and “unearned income,” are defined in the *Glossary* at the back of this publication.

**Comments and suggestions.** We welcome your comments about this publication and your suggestions for future editions.

You can write to us at the following address:

Internal Revenue Service  
Individual Forms and Publications Branch  
SE:W:CAR:MP:T:I  
1111 Constitution Ave. NW, IR-6406  
Washington, DC 20224

We respond to many letters by telephone. Therefore, it would be helpful if you would include your daytime phone number, including the area code, in your correspondence.

You can email us at [taxforms@irs.gov](mailto:taxforms@irs.gov). (The asterisk must be included in the address.) Please put “Publications Comment” on the subject line. Although we cannot respond individually to each email, we do appreciate your feedback and will consider your comments as we revise our tax products.

**Ordering forms and publications.** Visit [www.irs.gov/formspubs](http://www.irs.gov/formspubs) to download forms and publications, call 1-800-829-3676, or write to the address below and receive a response within 10 business days after your request is received.

National Distribution Center  
P.O. Box 8903  
Bloomington, IL 61702-8903

**Tax questions.** If you have a tax question, visit [www.irs.gov](http://www.irs.gov) or call 1-800-829-1040. We cannot answer tax questions sent to either of the above addresses.

## Useful Items

You may want to see:

### Publication

- 501** Exemptions, Standard Deduction, and Filing Information

### Form (and Instructions)

- W-4** Employee’s Withholding Allowance Certificate
- 8615** Tax for Children Under Age 18 With Investment Income of More Than \$1,700
- 8814** Parents’ Election To Report Child’s Interest and Dividends

See *How To Get Tax Help* near the end of this publication for information about getting these publications and forms.

## Part 1. Rules for All Dependents

### Terms you may need to know (see Glossary):

Dependent

- Earned income
- Exemption
- Gross income
- Itemized deductions
- Standard deduction
- Unearned income

This part of the publication discusses the filing requirements for dependents, who is responsible for a child's return, how to figure a dependent's standard deduction and exemption (if any), and whether a dependent can claim exemption from federal income tax withholding.

## Filing Requirements

Whether a dependent has to file a return generally depends on the amount of the dependent's earned and unearned income and whether the dependent is married, is age 65 or older, or is blind.



*A dependent may have to file a return even if his or her income is below the amount that would normally require a return. See Other Filing Requirements, later.*

The following sections apply to dependents with:

- Earned income only,
- Unearned income only, and
- Both earned and unearned income.

To find out whether a dependent must file, read the section that applies, or use Table 1 on the previous page.

### Earned Income Only

A dependent must file a return if all his or her income is earned income, and the total is more than the amount listed in the following table.

Marital Status	Amount
Single	
Under 65 and not blind . . . . .	\$5,150
Either 65 or older or blind . . . . .	\$6,400
65 or older and blind . . . . .	\$7,650
Married*	
Under 65 and not blind . . . . .	\$5,150
Either 65 or older or blind . . . . .	\$6,150
65 or older and blind . . . . .	\$7,150

\*If a dependent's spouse itemizes deductions on a separate return, the dependent must file a return if the dependent has \$5 or more of gross income (earned and/or unearned).

**Example.** William is 16. His mother claims an exemption for him on her income tax return. He worked part time on weekends during the school year and full time during the summer. He earned \$5,600 in wages. He did not have any unearned income.

He must file a tax return because he has earned income only and his total income is more than \$5,150. If he were blind, he would not have to file a return because his total income is not more than \$6,400.

### Unearned Income Only

A dependent must file a return if all his or her income is unearned income, and the total is more than the amount listed in the following table.

Marital Status	Amount
Single	
Under 65 and not blind . . . . .	\$ 850
Either 65 or older or blind . . . . .	\$2,100
65 or older and blind . . . . .	\$3,350
Married*	
Under 65 and not blind . . . . .	\$ 850
Either 65 or older or blind . . . . .	\$1,850
65 or older and blind . . . . .	\$2,850

\*If a dependent's spouse itemizes deductions on a separate return, the dependent must file a return if the dependent has \$5 or more of gross income (earned and/or unearned).

**Example.** Sarah is 18 and single. Her parents can claim an exemption for her on their income tax return. She received \$970 of taxable interest and dividend income. She did not work during the year.

She must file a tax return because she has unearned income only and her total income is more than \$850. If she were blind, she would not have to file a return because she has unearned income only and her total income is not more than \$2,100.

**Election to report child's unearned income on parent's return.** A parent of a child under age 18 may be able to elect to include the child's interest and dividend income on the parent's return. See *Parent's Election To Report Child's Interest and Dividends* in Part 2. If the parent makes this election, the child does not have to file a return.

### Earned and Unearned Income



A dependent who has both earned and unearned income generally must file a return if the total income is more than line 5 of the following worksheet.

#### Filing Requirement Worksheet for Most Dependents

1. Enter dependent's earned income plus \$300 . . . . .	
2. Minimum amount . . . . .	\$ 850
3. Compare lines 1 and 2. Enter the <b>larger</b> amount . . . . .	
4. Maximum amount . . . . .	5,150
5. Compare lines 3 and 4. Enter the <b>smaller</b> amount . . . . .	
6. Enter the dependent's gross (total) income. If line 6 is more than line 5, the dependent <b>must file</b> an income tax return. If the dependent is married and his or her spouse itemizes deductions on a separate return, the dependent must file an income tax return if line 6 is \$5 or more.	

**Example 1.** Joe is 20, single, not blind, and a full-time college student. His parents provide most of his support and claim an exemption for

him on their income tax return. He received \$200 taxable interest income and earned \$2,750 from a part-time job.

He does not have to file a tax return because his total income of \$2,950 (\$200 interest plus \$2,750 in wages) is not more than \$3,050, the amount on line 5 of his filled-in Filing Requirement Worksheet for Most Dependents (shown next).

#### Filing Requirement Worksheet for Most Dependents

1. Enter dependent's earned income plus \$300 . . . . .	\$ 3,050
2. Minimum amount . . . . .	850
3. Compare lines 1 and 2. Enter the <b>larger</b> amount . . . . .	3,050
4. Maximum amount . . . . .	5,150
5. Compare lines 3 and 4. Enter the <b>smaller</b> amount . . . . .	3,050
6. Enter the dependent's gross (total) income. If line 6 is more than line 5, the dependent <b>must file</b> an income tax return. If the dependent is married and his or her spouse itemizes deductions on a separate return, the dependent must file an income tax return if line 6 is \$5 or more.	\$ 2,950

**Example 2.** The facts are the same as in Example 1 except that Joe had \$600 taxable interest income.

He must file a tax return because his total income of \$3,350 (\$600 interest plus \$2,750 wages) is more than \$3,050, the amount on line 5 of his filled-in worksheet (shown next).

#### Filing Requirement Worksheet for Most Dependents

1. Enter dependent's earned income plus \$300 . . . . .	\$ 3,050
2. Minimum amount . . . . .	850
3. Compare lines 1 and 2. Enter the <b>larger</b> amount . . . . .	3,050
4. Maximum amount . . . . .	5,150
5. Compare lines 3 and 4. Enter the <b>smaller</b> amount . . . . .	3,050
6. Enter the dependent's gross (total) income. If line 6 is more than line 5, the dependent <b>must file</b> an income tax return. If the dependent is married and his or her spouse itemizes deductions on a separate return, the dependent must file an income tax return if line 6 is \$5 or more.	\$ 3,350



**Age 65 or older or blind.** A dependent who is age 65 or older or blind must file a return if his or her gross (total) income is more than line 7 of the following worksheet.

#### Filing Requirement Worksheet for Dependents Who Are Age 65 or Older or Blind

1. Enter dependent's earned income plus \$300 . . . . .	
2. Minimum amount . . . . .	\$ 850

3. Compare lines 1 and 2. Enter the **larger** amount . . . . .
4. Maximum amount . . . . . 5,150
5. Compare lines 3 and 4. Enter the **smaller** amount . . . . .
6. Enter the amount from the following table that applies to the dependent . . . . .

Marital Status	Amount
Single	
Either 65 or older or blind	\$1,250
65 or older and blind	\$2,500
Married	
Either 65 or older or blind	\$1,000
65 or older and blind	\$2,000

7. Add lines 5 and 6. Enter the total . . . . .
8. Enter the dependent's gross (total) income. If line 8 is more than line 7, the dependent must file an income tax return. If the dependent is married and his or her spouse itemizes deductions on a separate return, the dependent **must file** an income tax return if line 8 is \$5 or more. . . . .

**Example 3.** The facts are the same as in Example 2 except that Joe is also blind. He does not have to file a return because his total income of \$3,350 is not more than \$4,300, the amount on line 7 of his filled-in *Filing Requirement Worksheet for Dependents Who Are Age 65 or Older or Blind* (shown next).

**Filing Requirement Worksheet  
for Dependents  
Who Are Age 65 or Older or Blind**

1. Enter dependent's earned income plus \$300 . . . . . \$3,050
2. Minimum amount . . . . . 850
3. Compare lines 1 and 2. Enter the **larger** amount . . . . . 3,050
4. Maximum amount . . . . . 5,150
5. Compare lines 3 and 4. Enter the **smaller** amount . . . . . 3,050
6. Enter the amount from the following table that applies to the dependent . . . . . 1,250

Marital Status	Amount
Single	
Either 65 or older or blind	\$1,250
65 or older and blind	\$2,500
Married	
Either 65 or older or blind	\$1,000
65 or older and blind	\$2,000

7. Add lines 5 and 6. Enter the total . . . . . 4,300
8. Enter the dependent's gross (total) income. If line 8 is more than line 7, the dependent **must file** an income tax return. If the dependent is married and his or her spouse itemizes deductions on a separate return, the dependent must file an income tax return if line 8 is \$5 or more. . . . . \$3,350

## Other Filing Requirements

Some dependents may have to file a tax return even if their income is below the amount that would normally require them to file a return.

A dependent must file a tax return if he or she owes any other taxes, such as:

- Social security and Medicare taxes on tips not reported to his or her employer,
- Uncollected social security and Medicare or railroad retirement taxes on tips reported to his or her employer or on group-term life insurance,
- Alternative minimum tax,
- Recapture taxes, such as the tax from recapture of an education credit, or
- Tax on a qualified plan, including an individual retirement arrangement (IRA), or other tax-favored account. But if the dependent is filing a return only because of this tax, the dependent can file Form 5329 by itself.

A dependent must also file a tax return if he or she:

- Received any advance earned income credit payments from his or her employers in 2006,
- Had wages of \$108.28 or more from a church or qualified church-controlled organization that is exempt from employer social security and Medicare taxes, or
- Had net earnings from self-employment of at least \$400.

**Spouse itemizes.** A dependent must file a return if the dependent's spouse itemizes deductions on a separate return and the dependent has \$5 or more of gross income (earned and/or unearned).

## Should a Return Be Filed Even If Not Required?

Even if a dependent does not meet any of the filing requirements discussed earlier, he or she should file a tax return if either of the following applies.

- Income tax was withheld from his or her income.
- He or she qualifies for the earned income credit, the additional child tax credit, the health coverage tax credit, or the credit for federal telephone excise tax paid. See the tax return instructions to find out who qualifies for these credits. (If the dependent is not required to file and is filing only to get a credit for federal telephone excise tax paid, he or she can file using Form 1040EZ-T, Request for Refund of Federal Telephone Excise Tax.)

By filing a return, the dependent can get a refund.

## Responsibility for Child's Return

Generally, the child is responsible for filing his or her own tax return and for paying any tax, penalties, or interest on that return. If a child cannot file his or her own return for any reason, such as age, the child's parent or guardian is responsible for filing a return on his or her behalf.

**Signing the child's return.** If the child cannot sign his or her return, a parent or guardian can sign the child's name in the space provided at the bottom of the tax return. Then, he or she should add: "By (signature), parent (or guardian) for minor child."

**Authority of parent or guardian.** A parent or guardian who signs a return on a child's behalf can deal with the IRS on all matters connected with the return.

In general, a parent or guardian who does not sign the child's return can only provide information concerning the child's return and pay the child's tax. That parent or guardian is not entitled to receive information from the IRS or legally bind the child to a tax liability arising from the return.

**Third party designee.** A child's parent or guardian who does not sign the child's return may be authorized, as a third party designee, to discuss the processing of the return with the IRS as well as provide information concerning the return. The child or the person signing the return on the child's behalf must check the "Yes" box in the "Third Party Designee" area of the return and name the parent or guardian as the designee.

If designated, a parent or guardian can respond to certain IRS notices and receive information about the processing of the return and the status of a refund or payment. This designation does not authorize the parent or guardian to receive any refund check, bind the child to any tax liability, or otherwise represent the child before the IRS. See the return instructions for more information.

**Designated as representative.** A parent or guardian who does not sign the child's return may be designated as the child's representative by the child or the person signing the return on the child's behalf. Form 2848, Power of Attorney and Declaration of Representative, is used to designate a child's representative. See Publication 947, Practice Before the IRS and Power of Attorney, for more information.

If designated, a parent or guardian can receive information about the child's return but cannot legally bind the child to a tax liability unless authorized to do so by the law of the state in which the child lives.

**IRS notice.** If you or the child receives a notice from the IRS concerning the child's return or tax liability, you should immediately inform the IRS that the notice concerns a child. The notice will show who to contact. The IRS will try to resolve the matter with the parent(s) or guardian(s) of the child consistent with their authority.

**Child's earnings.** For federal income tax purposes, the income a child receives for his or her personal services (labor) is the child's, even if, under state law, the parent is entitled to and receives that income.

## Table 2. Standard Deduction Worksheet for Dependents

Keep for Your Records



Use this worksheet only if someone can claim you (or your spouse, if filing jointly) as a dependent.	
If you were 65 or older and/or blind, check the correct number of boxes below. Put the total number of boxes checked in box c and go to line 1.	
a. You	65 or older <input type="checkbox"/> Blind <input type="checkbox"/>
b. Your spouse, if claiming spouse's exemption	65 or older <input type="checkbox"/> Blind <input type="checkbox"/>
c. Total boxes checked	<input type="checkbox"/>
1. Enter your <b>earned income</b> (defined below) plus \$300. If none, enter -0-.	1. _____
2. Minimum amount.	2. <u>    \$850    </u>
3. Compare lines 1 and 2. Enter the <b>larger</b> of the two amounts here.	3. _____
4. Enter on line 4 the amount shown below for your filing status. <ul style="list-style-type: none"> <li>• Single or Married filing separately—\$5,150</li> <li>• Married filing jointly or qualifying widow(er) with dependent child—\$10,300</li> <li>• Head of household—\$7,550</li> </ul>	4. _____
5. <b>Standard deduction.</b>	
a. Compare lines 3 and 4. Enter the <b>smaller</b> amount here. If under 65 and not blind, stop here. This is your standard deduction. Otherwise, go on to line 5b.	5a. _____
b. If 65 or older or blind, multiply \$1,250 (\$1,000 if married or qualifying widow(er) with dependent child) by the number in box c above. Enter the result here.	5b. _____
c. Add lines 5a and 5b. This is your standard deduction for 2006.	5c. _____
<b>Earned income</b> includes wages, salaries, tips, professional fees, and other compensation received for personal services you performed. It also includes any amount received as a scholarship that you must include in income.	

If the child does not pay the tax due on this income, the parent may be liable for the tax.

**Child's expenses.** Deductions for payments that are made out of a child's earnings are the child's, even if the payments are made by the parent.

**Example.** You made payments on your child's behalf that are deductible as a business expense and a charitable contribution. You made the payments out of your child's earnings. These items can be deducted only on the child's return.

## Standard Deduction

The standard deduction for an individual who can be claimed as a dependent on another person's tax return is generally limited to the larger of:

1. \$850, or
2. The individual's earned income plus \$300, but not more than the regular standard deduction (generally \$5,150).

However, the standard deduction for a dependent who is age 65 or older or blind is higher.

Certain dependents cannot claim any standard deduction. See *Standard Deduction of Zero*, later.

**Table 2.** Use *Table 2* to figure the dependent's standard deduction.

**Example 1.** Michael is single, age 15, and not blind. His parents can claim him as a dependent on their tax return. He has taxable interest income of \$800 and wages of \$150. He enters \$450 (his earned income plus \$300) on line 1 of *Table 2*. On line 3, he enters \$850, the larger of \$450 or \$850. Michael enters \$5,150 on line 4. On line 5a, he enters \$850, the smaller of \$850 or \$5,150. His standard deduction is \$850.

**Example 2.** Judy, a full-time student, is single, age 22, and not blind. Her parents can claim her as a dependent on their tax return. She has dividend income of \$275 and wages of \$2,500. She enters \$2,800 (her earned income plus \$300) on line 1 of *Table 2*. On line 3, she enters \$2,800, the larger of \$2,800 or \$850. She enters \$5,150 on line 4. On line 5a, she enters \$2,800 (the smaller of \$2,800 or \$5,150) as her standard deduction.

**Example 3.** Amy, who is single, is claimed as a dependent on her parents' tax return. She is 18 and blind. She has taxable interest income of \$1,000 and wages of \$2,000. She enters \$2,300

(her earned income plus \$300) on line 1 of *Table 2*. She enters \$2,300 (the larger of \$2,300 or \$850) on line 3, \$5,150 on line 4, and \$2,300 (the smaller of \$2,300 or \$5,150) on line 5a. Because Amy is blind, she checks the box for blindness and enters "1" in box c at the top of *Table 2*. She enters \$1,250 (the number in box c times \$1,250) on line 5b. Her standard deduction on line 5c is \$3,550 (\$2,300 + \$1,250).

## Standard Deduction of Zero

The standard deduction for the following dependents is zero.

- A married dependent filing a separate return whose spouse itemizes deductions.
- A dependent who files a return for a period of less than 12 months due to a change in his or her annual accounting period.
- A nonresident or dual-status alien dependent, unless the dependent is married to a U.S. citizen or resident alien at the end of the year and chooses to be treated as a U.S. resident for the year. See Publication 519, U.S. Tax Guide for Aliens, for information on making this choice.

**Example.** Jennifer, who is a dependent of her parents, is entitled to file a joint return with her husband. However, her husband elects to file a separate return and itemize his deductions. Because he itemizes, Jennifer's standard deduction on her return is zero. She can, however, itemize any of her allowable deductions.

## Dependent's Own Exemption

A person who can be claimed as a dependent on another taxpayer's return cannot claim his or her own exemption. This is true even if the other taxpayer does not actually claim the exemption.

**Example.** James and Barbara can claim their child, Ben, as a dependent on their return. Ben is a full-time college student who works during the summer and must file a tax return. Ben cannot claim his own exemption on his return. This is true even if James and Barbara do not claim him as a dependent on their return.

## Withholding From Wages

Employers generally withhold federal income tax, social security tax, and Medicare tax from an employee's wages. If the employee claims exemption from withholding on Form W-4, the employer will not withhold federal income tax. The exemption from withholding does not apply to social security and Medicare taxes.

### Conditions for exemption from withholding.

An employee can claim exemption from withholding for 2007 only if he or she meets both of the following conditions.

1. For 2006, the employee had a right to a refund of all federal income tax withheld because he or she had no tax liability.
2. For 2007, the employee expects a refund of all federal income tax withheld because he or she expects to have no tax liability.

**Dependents.** An employee who is a dependent ordinarily cannot claim exemption from withholding if both of the following are true.

- The employee's total income will be more than the minimum standard deduction amount. This amount was \$850 for 2006, but may be higher for 2007. Check the instructions for the 2007 Form W-4 for the correct amount.
- The employee's unearned income will be more than \$300.

**Exceptions.** An employee who is age 65 or older or blind, or who will claim adjustments to income, itemized deductions, or tax credits on his or her 2007 tax return, may be able to claim exemption from withholding even if the employee is a dependent. For more information, see the discussions under *Exemption From Withholding* in chapter 1 of Publication 505, Tax Withholding and Estimated Tax.

**Example.** Guy is 17 and a student. During the summer he works part time at a grocery store. He expects to earn about \$1,000 this year. He also worked at the store last summer and received a refund of all his withheld income tax because he did not have a tax liability. The only other income he expects during the year is \$375 interest on a savings account. He expects that his parents will be able to claim him as a dependent on their tax return. He is not blind and will not claim adjustments to income, itemized deductions, or tax credits on his return.

Guy cannot claim exemption from withholding when he fills out Form W-4 because his parents will be able to claim him as a dependent, his total income will be more than \$850, the minimum standard deduction amount, and his unearned income will be more than \$300.

**Claiming exemption from withholding.** To claim exemption from withholding, an employee must enter "Exempt" in the space provided on Form W-4, line 7. The employee must complete the rest of the form, as explained in the form instructions, and give it to his or her employer.

**Renewing an exemption from withholding.** An exemption from withholding is good for only one year. An employee must file a new Form W-4 by February 15 each year to continue the exemption.

## Part 2. Tax on Investment Income of Child Under 18

**Terms you may need to know (see Glossary):**

Adjusted gross income  
Adjustments to income  
Alternative minimum tax

Capital gain distribution  
Dependent  
Earned income  
Gross income  
Investment income  
Itemized deductions  
Net capital gain  
Net investment income  
Qualified dividends  
Standard deduction  
Tax year  
Taxable income  
Unearned income  
Unrecaptured section 1250 gain  
28% rate gain

The two rules that follow may affect the tax on certain investment income of a child under age 18.

1. If the child's interest and dividend income (including capital gain distributions) total less than \$8,500, the child's parent may be able to choose to include that income on the parent's return rather than file a return for the child. (See *Parent's Election To Report Child's Interest and Dividends*, later.)
2. If the child's interest, dividends, and other investment income total more than \$1,700, part of that income may be taxed at the parent's tax rate instead of the child's tax rate. (See *Tax for Children Under Age 18 Who Have Investment Income of More Than \$1,700*, later.)

For these rules, the term "child" includes a legally adopted child and a stepchild. These rules apply whether or not the child is a dependent.

These rules do not apply if:

- The child is not required to file a tax return (see *Filing Requirements* in Part 1),
- Neither of the child's parents were living at the end of the tax year, or
- The child files a joint return for the year.

### Which Parent's Return To Use

If a child's parents are married to each other and file a joint return, use the joint return to figure the tax on the investment income of a child under 18. The tax rate and other return information from that return are used to figure the child's tax as explained later under *Tax for Children Under Age 18 Who Have Investment Income of More Than \$1,700*.

### Parents Who Do Not File a Joint Return

For parents who do not file a joint return, the following discussions explain which parent's tax return must be used to figure the tax.

Only the parent whose tax return is used can make the election described under *Parent's Election To Report Child's Interest and Dividends*.

**Parents are married.** If the child's parents file separate returns, use the return of the parent with the greater taxable income.

**Parents not living together.** If the child's parents are married to each other but not living together, and the parent with whom the child lives (the custodial parent) is considered unmarried, use the return of the custodial parent. If the custodial parent is not considered unmarried, use the return of the parent with the greater taxable income.

For an explanation of when a married person living apart from his or her spouse is considered unmarried, see *Head of Household* in Publication 501.

**Parents are divorced.** If the child's parents are divorced or legally separated, and the parent who had custody of the child for the greater part of the year (the custodial parent) has not remarried, use the return of the custodial parent.

**Custodial parent remarried.** If the custodial parent has remarried, the stepparent (rather than the noncustodial parent) is treated as the child's other parent. Therefore, if the custodial parent and the stepparent file a joint return, use that joint return. Do not use the return of the noncustodial parent.

If the custodial parent and the stepparent are married, but file separate returns, use the return of the one with the greater taxable income. If the custodial parent and the stepparent are married but not living together, the earlier discussion under *Parents not living together* applies.

**Parents never married.** If a child's parents did not marry each other, but lived together all year, use the return of the parent with the greater taxable income. If the parents did not live together all year, the rules explained earlier under *Parents are divorced* apply.

**Widowed parent remarried.** If a widow or widower remarries, the new spouse is treated as the child's other parent. The rules explained earlier under *Custodial parent remarried* apply.

## Parent's Election To Report Child's Interest and Dividends

You may be able to elect to include your child's interest and dividend income (including capital gain distributions) on your tax return. If you do, your child will not have to file a return.

You can make this election for 2006 only if all the following conditions are met.

- Your child was under age 18 at the end of 2006. (A child born on January 1, 1989, is considered to be age 18 at the end of 2006; you cannot make the election for this child.)
- Your child had income only from interest and dividends (including capital gain distributions and Alaska Permanent Fund dividends).
- The dividend and interest income was less than \$8,500.
- Your child is required to file a return for 2006 unless you make this election.
- The child does not file a joint return for 2006.

- No estimated tax payment was made for 2006 and no 2005 overpayment was applied to 2006 under your child's name and social security number.
- No federal income tax was taken out of your child's income under the backup withholding rules.
- You are the parent whose return must be used when applying the special tax rules for children under age 18. (See *Which Parent's Return To Use*, earlier.)

These conditions are also shown in *Figure 1*.

**How to make the election.** Make the election by attaching Form 8814 to your Form 1040 or Form 1040NR. (If you make this election, you cannot file Form 1040A or Form 1040EZ.) Attach a separate Form 8814 for each child for whom you make the election. You can make the election for one or more children and not for others.

## Effect of Making the Election

The federal income tax on your child's income may be more if you make the Form 8814 election.

**Rate may be higher.** If your child received qualified dividends or capital gain distributions, you may pay up to \$42.50 more tax if you make this election instead of filing a separate tax return for the child. This is because the tax rate on the child's income between \$850 and \$1,700 is 10% if you make this election. However, if you file a separate return for the child, the tax rate may be as low as 5% because of the preferential tax rates for qualified dividends and capital gain distributions.

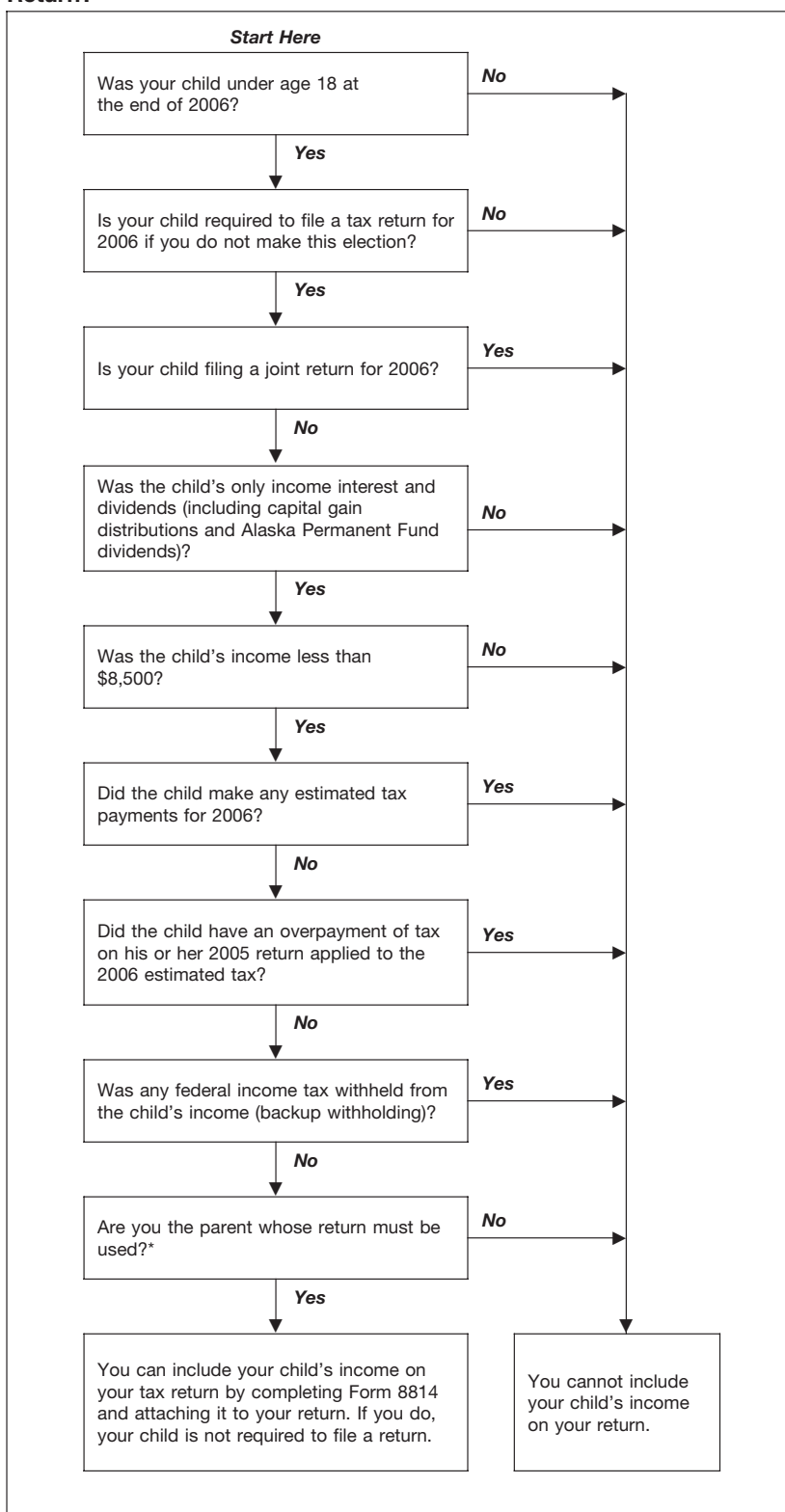
**Deductions you cannot take.** By making the Form 8814 election, you cannot take any of the following deductions that the child would be entitled to on his or her return.

- The higher standard deduction for a blind child.
- The deduction for a penalty on an early withdrawal of your child's savings.
- Itemized deductions (such as your child's investment expenses or charitable contributions).

**Deductible investment interest.** If you use Form 8814, your child's investment income is considered your investment income. To figure the limit on your deductible investment interest, add the child's investment income to yours. However, if your child received qualified dividends, capital gain distributions, or Alaska Permanent Fund dividends, see chapter 3 of Publication 550, *Investment Income and Expenses*, for information about how to figure the limit.

**Alternative minimum tax.** If your child received tax-exempt interest from a private activity bond, you must determine if that interest is a tax preference item for alternative minimum tax (AMT) purposes. If it is, you must include it with your own tax preference items when figuring your AMT. For more information, get the instructions for Form 6251, *Alternative Minimum Tax—Individuals*.

Figure 1. **Can You Include Your Child's Income On Your Tax Return?**



\*See *Which Parent's Return To Use*

**Reduced deductions or credits.** If you use Form 8814, your increased adjusted gross income may reduce certain deductions or credits on your return, including the following.

- Deduction for contributions to a traditional individual retirement arrangement (IRA).
- Deduction for student loan interest.
- Itemized deductions for medical expenses, casualty and theft losses, and certain miscellaneous expenses.
- Total itemized deductions.
- Personal exemptions.
- Credit for child and dependent care expenses.
- Child tax credit.

- Education tax credits.
- Earned income credit.

### Penalty for underpayment of estimated tax.

If you make this election for 2006 and did not have enough tax withheld or pay enough estimated tax to cover the tax you owe, you may be subject to a penalty. If you plan to make this election for 2007, you may need to increase your federal income tax withholding or your estimated tax payments to avoid the penalty. Get Publication 505 for more information.

## Figuring Child's Income

Use Form 8814, Part I, to figure your child's interest and dividend income to report on your return. Only the amount over \$1,700 is added to your income. The amount over \$1,700 is shown on Form 8814, line 12. Unless the child's income includes qualified dividends or capital gain distributions (discussed next), the same amount is shown on Form 8814, line 12. Include the amount from Form 8814, line 12, on Form 1040 or Form 1040NR, line 21. If you file more than one Form 8814, include the total amounts from line 12 of all your Forms 8814 on Form 1040 or Form 1040NR, line 21. In the space next to line 21, enter "Form 8814" and the total of the Form 8814, line 12 amounts.

**Note.** The tax on the first \$1,700 is figured on Form 8814, Part II. See *Figuring Additional Tax*, later.

**Qualified dividends.** Enter on Form 8814, line 2a, any ordinary dividends your child received. This amount may include qualified dividends. Qualified dividends are those dividends reported on Form 1040, line 9b, or Form 1040NR, line 10b, and are eligible for the lower tax rates that apply to a net capital gain. For detailed information about qualified dividends, see Publication 550, *Investment Income and Expenses*.

If your child received qualified dividends, the amount of these dividends that is added to your income must be reported on Form 1040, lines 9a and 9b, or Form 1040NR, lines 10a and 10b. You do not include these dividends on Form 8814, line 12, or on line 21 of Form 1040, or Form 1040NR.

Enter the child's qualified dividends on Form 8814, line 2b. But do not include this amount on Form 1040, lines 9a and 9b, or Form 1040NR, lines 10a and 10b. Instead, include the amount from Form 8814, line 9, on Form 1040, lines 9a and 9b, or Form 1040NR, lines 10a and 10b. (The amount on Form 8814, line 9, may be less than the amount on Form 8814, line 2b, because lines 7 through 12 of the form divide the \$1,700 base amount on Form 8814, line 5, between the child's qualified dividends, capital gain distributions, and other interest and dividend income, reducing each of those amounts.)

**Capital gain distributions.** Enter on Form 8814, line 3, any capital gain distributions your child received. The amount of these distributions that is added to your income must be reported on Schedule D (Form 1040), line 13, or, if you are not required to file Schedule D, on Form 1040, line 13, or Form 1040NR, line 14. You do not include it on Form 8814, line 12, or on line 21 of Form 1040 or Form 1040NR.

Include the amount from Form 8814, line 10, on Schedule D (Form 1040), line 13; Form 1040, line 13; or Form 1040NR, line 14, whichever applies. (The amount on Form 8814, line 10, may be less than the amount on Form 8814, line 3, because lines 7 through 12 of the form divide the \$1,700 base amount on Form 8814, line 5, between the child's qualified dividends, capital gain distributions, and other interest and dividend income, reducing each of those amounts.)

**Collectibles (28% rate) gain.** If any of the child's capital gain distributions are reported on Form 1099-DIV as collectibles (28% rate) gain, you must determine how much to also include on line 4 of the 28% Rate Gain Worksheet, in the instructions for line 18, Schedule D. Multiply the child's capital gain distribution included on Schedule D, line 13, by a fraction. The numerator is the part of the child's total capital gain distribution that is collectibles (28% rate) gain. The denominator is the child's total capital gain distribution. Enter the result on line 4 of the 28% Rate Gain Worksheet.

**Unrecaptured section 1250 gain.** If any of the child's capital gain distributions are reported on Form 1099-DIV as unrecaptured section 1250 gain, you must determine how much to include on line 11 of the Unrecaptured Section 1250 Gain Worksheet in the instructions for line 19 of Schedule D. Multiply the child's capital gain distribution included on Schedule D, line 13, by a fraction. The numerator is the part of the child's total capital gain distribution that is unrecaptured section 1250 gain. The denominator is the child's total capital gain distribution. Enter the result on line 11 of the Unrecaptured Section 1250 Gain Worksheet.

**Section 1202 gain.** If any of the child's capital gain distributions are reported as section 1202 gain (gain on qualified small business stock) on Form 1099-DIV, part or all of that gain may be eligible for the section 1202 exclusion. (For information about the exclusion, see chapter 4 of Publication 550.) To figure that part, multiply the child's capital gain distribution included on Schedule D, line 13, by a fraction. The numerator is the part of the child's total capital gain distribution that is section 1202 gain. The denominator is the child's total capital gain distribution. Your section 1202 exclusion is generally 50% of the result, but may be subject to a limit. See the instructions for Schedule D for details and for information on how to report the exclusion amount.

**Example.** Fred is 6 years old. In 2006, he received dividend income of \$1,900, which included \$1,480 of ordinary dividends and a \$420 capital gain distribution from a mutual fund. (None of the distributions were reported on Form 1099-DIV as unrecaptured section 1250 gain, section 1202 gain, or collectibles (28% rate) gain.) All of the ordinary dividends are qualified dividends. He has no other income and is not subject to backup withholding. No estimated tax payments were made under his name and social security number.

Fred's parents elect to include Fred's income on their tax return instead of filing a return for him.

They figure the amount to report on Form 1040, lines 9a and 9b, the amount to report on

their Schedule D, line 13, and the amount to report on Form 1040, line 21, as follows.

They leave lines 1a and 1b of Form 8814 blank because Fred does not have any interest income. They enter his ordinary dividends of \$1,480 on line 2b because all of Fred's ordinary dividends are qualified dividends. They enter the amount of Fred's capital gain distributions, \$420, on line 3. Next, they add the amounts on lines 1a, 2a, and 3 and enter the result, \$1,900, on line 4.

They subtract the base amount on line 5, \$1,700, from the amount on line 4, \$1,900, and enter the result, \$200, on line 6. This is the total amount from Form 8814 to be reported on their return. Next, they figure how much of this amount qualified dividends and how much is capital gain distributions.

- They divide the amount on line 2b, \$1,480, by the amount on line 4, \$1,900. They enter the result, .779, on line 7.
- They divide the amount on line 3, \$420, by the amount on line 4, \$1,900. They enter the result, .221, on line 8.
- They multiply the amount on line 6, \$200, by the decimal on line 7, .779, and enter the result, \$156 on line 9.
- They multiply the amount on line 6, \$200, by the decimal on line 8, .221, and enter the result, \$44, on line 10.
- They include the amount from line 9, \$156, on lines 9a and 9b of their Form 1040 and enter "Form 8814 - \$156" on the dotted lines next to lines 9a and 9b. They include the amount from line 10, \$44, on line 13 of their Schedule D (Form 1040) and enter "Form 8814 - \$44" on the dotted line next to line 13 of Schedule D.

They enter \$200 (\$156 + \$44) on line 11 and -0- (\$200 - \$200) on line 12. Because the amount on line 12 is -0-, they do not include any amount from Form 8814 on line 21 of their Form 1040.

## Figuring Additional Tax

Use Form 8814, Part II, to figure the tax on the \$1,700 of your child's interest and dividends that you do not include in your income. This tax is added to the tax figured on your income.

This additional tax is the smaller of:

1. 10% x (your child's gross income - \$850), or
2. \$85.



Include the amount from line 15 of all your Forms 8814 in the total on Form 1040, line 44, or Form 1040NR, line 41. Check box a on Form 1040, line 44, or Form 1040NR, line 41.

## Illustrated Example

David and Linda Parks are married and will file separate tax returns for 2006. Their only child, Philip, is 8. Philip received a Form 1099-INT showing \$1,650 taxable interest income and a



**Parents' Election To Report  
Child's Interest and Dividends**

▶ See instructions.  
▶ Attach to parents' Form 1040 or Form 1040NR.

Name(s) shown on your return <p style="text-align:center;">Linda Parks</p>	Your social security number <p style="text-align:center;">111   00   1111</p>
---	--

**Caution.** The federal income tax on your child's income, including qualified dividends and capital gain distributions, may be less if you file a separate tax return for the child instead of making this election. This is because you cannot take certain tax benefits that your child could take on his or her own return. For details, see **Tax benefits you cannot take** on page 2.

A Child's name (first, initial, and last) <p style="text-align:center;">Phillip Parks</p>	B Child's social security number <p style="text-align:center;">000   00   0000</p>
--	---

c If more than one Form 8814 is attached, check here

**Part I Child's Interest and Dividends To Report on Your Return**

1a Enter your child's <b>taxable</b> interest. If this amount is different from the amounts shown on the child's Forms 1099-INT and 1099-OID, see the instructions . . . . .	<b>1a</b>	1,650	
b Enter your child's <b>tax-exempt</b> interest. <b>Do not</b> include this amount on line 1a . . . . .	<b>1b</b>		
2a Enter your child's ordinary dividends, including any Alaska Permanent Fund dividends. If your child received any ordinary dividends as a nominee, see the instructions . . . . .	<b>2a</b>	1,150	
b Enter your child's qualified dividends included on line 2a. See the instructions . . . . .	<b>2b</b>	1,150	
3 Enter your child's capital gain distributions. If your child received any capital gain distributions as a nominee, see the instructions . . . . .	<b>3</b>		
4 Add lines 1a, 2a, and 3. If the total is \$1,700 or less, skip lines 5 through 12 and go to line 13. If the total is \$8,500 or more, <b>do not</b> file this form. Your child <b>must</b> file his or her own return to report the income. . . . .	<b>4</b>	2,800	
5 Base amount . . . . .	<b>5</b>	1,700	00
6 Subtract line 5 from line 4 . . . . .	<b>6</b>	1,100	
<b>If both lines 2b and 3 are zero or blank, skip lines 7 through 10, enter -0- on line 11, and go to line 12. Otherwise, go to line 7.</b>			
7 Divide line 2b by line 4. Enter the result as a decimal (rounded to at least three places) . . . . .	<b>7</b>		.411
8 Divide line 3 by line 4. Enter the result as a decimal (rounded to at least three places) . . . . .	<b>8</b>		.
9 Multiply line 6 by line 7. Enter the result here. See the instructions for where to report this amount on your return . . . . .	<b>9</b>	452	
10 Multiply line 6 by line 8. Enter the result here. See the instructions for where to report this amount on your return . . . . .	<b>10</b>		
11 Add lines 9 and 10 . . . . .	<b>11</b>		452
12 Subtract line 11 from line 6. Include this amount in the total on Form 1040, line 21, or Form 1040NR, line 21. In the space next to line 21, enter "Form 8814" and show the amount. If you checked the box on line C above, see the instructions. Go to line 13 below . . . . .	<b>12</b>		648

**Part II Tax on the First \$1,700 of Child's Interest and Dividends**

13 Amount not taxed . . . . .	<b>13</b>	850	00
14 Subtract line 13 from line 4. If the result is zero or less, enter -0-. . . . .	<b>14</b>	1,950	
15 <b>Tax.</b> Is the amount on line 14 less than \$850? <input checked="" type="checkbox"/> <b>No.</b> Enter \$85 here and see the <b>Note</b> below. <input type="checkbox"/> <b>Yes.</b> Multiply line 14 by 10% (.10). Enter the result here and see the <b>Note</b> below.	<b>15</b>	85	

**Note.** If you checked the box on line C above, see the instructions. Otherwise, include the amount from line 15 in the tax you enter on Form 1040, line 44, or Form 1040NR, line 41. Be sure to check box **a** on Form 1040, line 44, or Form 1040NR, line 41.

Form 1099-DIV showing \$1,150 ordinary dividends. All the dividends were qualified dividends. His parents decide to include that income on one of their returns so they will not have to file a return for Philip.

First, David and Linda each figure their taxable income (Form 1040, line 43) without regard to Philip's income. David's taxable income is \$56,700 and Linda's is \$74,300. Because her taxable income is greater, Linda can elect to include Philip's income on her return. (See *Which Parent's Return To Use*, earlier.)

On Form 8814 (illustrated on the previous page), Linda enters her name and social security number, then Philip's name and social security number. She enters Philip's taxable interest income, \$1,650, on line 1a. Philip had no tax-exempt interest income, so she leaves line 1b blank. Linda enters Philip's ordinary dividends, \$1,150, on line 2a. All of Philip's ordinary dividends were qualified dividends, so Linda also enters \$1,150 on line 2b. Philip did not have any capital gain distributions, so she leaves line 3 blank.

Linda adds lines 1a and 2a and enters the result, \$2,800, on line 4. Because Philip had qualified dividends, Linda must complete lines 7 through 11 of Form 8814. She includes the amount from line 9 of Form 8814 (\$452) on lines 9a and 9b of her Form 1040. On the dotted lines next to lines 9a and 9b, she enters "Form 8814-\$452."

Linda includes \$648 in the total on line 21 of her Form 1040 (not illustrated) and in the space next to that line writes "Form 8814-\$648." Adding that amount, plus the \$452 of qualified

dividends, to her income increases each of the amounts on lines 22, 37, 38, 41, and 43 of her Form 1040 by \$1,100. Linda is not claiming any deductions that are affected by the increase to her income. Therefore, her revised taxable income on line 43 is \$75,400 (\$74,300 + \$452 + \$648).

On Form 8814, Linda subtracts the \$850 shown on line 13 from the \$2,800 on line 4 and enters the result, \$1,950, on line 14. Because that amount is not less than \$850, she enters \$85 on line 15. This is the tax on the first \$1,700 of Philip's income, which Linda did not have to add to her income. She must add this additional tax to the tax figured on her revised taxable income.

The tax on her \$75,400 revised taxable income, figured using the Qualified Dividends and Capital Gain Tax Worksheet in the Form 1040 instructions, is \$15,749. She adds \$85, and enters the \$15,834 total on Form 1040, line 44, and checks box a.

Linda attaches Form 8814 to her Form 1040.

## Tax for Children Under Age 18 Who Have Investment Income of More Than \$1,700

Part of a child's 2006 investment income may be subject to tax at the parent's tax rate if all of the following statements are true.

- The child was under age 18 at the end of 2006. (A child born on January 1, 1989, is considered to be age 18 at the end of 2006; this child's investment income is not taxed at the parent's tax rate.)
- The child's investment income was more than \$1,700.
- The child is required to file a tax return for 2006.
- The child does not file a joint return for 2006.

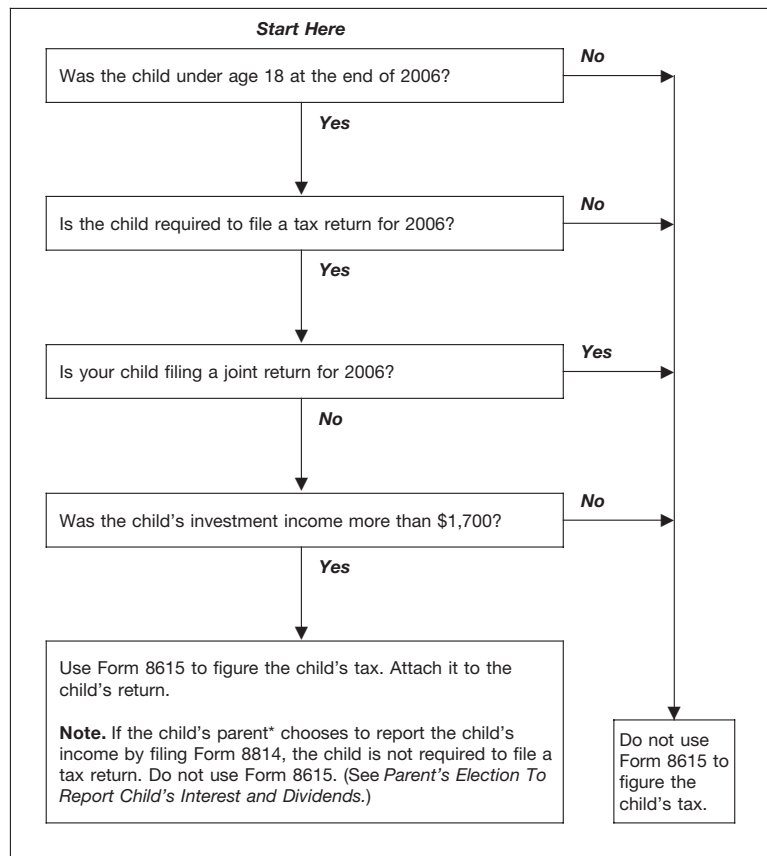
These conditions are also shown in Figure 2.

If neither parent was alive on December 31, 2006, do not use Form 8615. Instead, figure the child's tax in the normal manner.

If the parent does not or cannot choose to include the child's income on the parent's return, use Form 8615 to figure the child's tax. Attach the completed form to the child's Form 1040, Form 1040A, or Form 1040NR.

The following discussions explain the parental information needed for Form 8615 and the steps to follow in figuring the child's tax.

Figure 2. Do You Have To Use Form 8615 To Figure Your Child's Tax?



\*See *Which Parent's Return To Use*

## Providing Parental Information (Form 8615, Lines A–C)

On Form 8615, lines A and B, enter the parent's name and social security number. (If the parents filed a joint return, enter the name and social security number listed first on the joint return.) On line C, check the box for the parent's filing status.

See *Which Parent's Return To Use*, earlier, for information on which parent's return information must be used on Form 8615.

**Parent with different tax year.** If the parent and the child do not have the same tax year, complete Form 8615 using the information on the parent's return for the tax year that ends in the child's tax year.

**Example.** Kimberly must use her mother's tax and taxable income to complete her Form 8615 for calendar year 2006 (January 1 – December 31). Kimberly's mother files her tax return on a fiscal year basis (July 1 – June 30). Kimberly must use the information on her mother's return for the tax year ending June 30, 2006, to complete her 2006 Form 8615.

**Parent's return information not known timely.** If the information needed from the parent's return is not known by the time the child's return is due (usually April 15), you can file the return using estimates.

You can use any reasonable estimate. This includes using information from last year's return. If you use an estimated amount on Form 8615, enter "Estimated" on the line next to the amount.

When you get the correct information, file an amended return on Form 1040X, Amended U.S. Individual Income Tax Return.

**Extension of time to file.** Instead of using estimates, you can get an automatic 6-month extension of time to file if, by the date your return is due, you file Form 4868, Application for Automatic Extension of Time To File U.S. Individual Income Tax Return. You can file a paper Form 4868 or you can file it electronically. See the instructions for Form 4868 for details.



An extension of time to file is not an extension of time to pay. You must make an accurate estimate of the tax for 2006. If you do not pay the full amount due by the regular due date, the child will owe interest and may also be charged penalties. See Form 4868 and its instructions.

**Parent's return information not available.** If a child cannot get the required information about his or her parent's tax return, the child (or the child's legal representative) can request the necessary information from the Internal Revenue Service (IRS).

**How to request.** After the end of the tax year, send a signed, written request for the information to the Internal Revenue Service Center where the parent's return will be filed. (The IRS cannot process a request received before the end of the tax year.)



You should also consider getting an extension of time to file the child's return, because there may be a delay in getting the requested information.

The request must contain all of the following.

- A statement that you are making the request to comply with section 1(g) of the Internal Revenue Code and that you have tried to get the information from the parent.
- Proof the child is under 18 years of age (for example, a copy of the child's birth certificate).
- Evidence the child has more than \$1,700 of unearned income (for example, a copy of the child's prior year tax return or copies of Forms 1099 for the current year).
- The name, address, social security number (if known), and filing status (if known) of the parent whose information is to be shown on Form 8615.

A child's legal representative making the request should include a copy of his or her Power of Attorney, such as Form 2848, or proof of legal guardianship.

## Step 1. Figuring the Child's Net Investment Income (Form 8615, Part I)

The first step in figuring a child's tax using Form 8615 is to figure the child's net investment income. To do that, use Form 8615, Part I. For an

example, see the Illustrated Part I of Form 8615 on the next page.

### Line 1 (Investment Income)

If the child had no earned income, enter on this line the adjusted gross income shown on the child's return. Adjusted gross income is shown on Form 1040, line 38; Form 1040A, line 22; or Form 1040NR, line 36. Form 1040EZ and Form 1040NR-EZ cannot be used if Form 8615 must be filed.

If the child had earned income, figure the amount to enter on Form 8615, line 1, by using the worksheet in the instructions for the form.



However, use the following worksheet if the child has excluded any foreign earned income or deducted a loss from self-employment or a net operating loss from another year.

#### Alternate Worksheet for Form 8615, Line 1

- A. Enter the amount from the child's Form 1040, line 22, or Form 1040NR, line 23 . . . . . \_\_\_\_\_
  - B. Enter the total of any net loss from self-employment, any net operating loss deduction, any foreign earned income exclusion, and any foreign housing exclusion from the child's Form 1040 or Form 1040NR. Enter this total as a positive number (greater than zero) . . . . . \_\_\_\_\_
  - C. Add line A and line B and enter the total. . . . . \_\_\_\_\_
  - D. Enter the child's earned income plus any amount from the child's Form 1040, line 30 or the child's Form 1040NR, line 29. . . . . \_\_\_\_\_
- Generally, the child's earned income is the total of the amounts reported on Form 1040, lines 7, 12, and 18 (if line 12 or 18 is a loss, use zero) or Form 1040NR, lines 8, 13, and 19 (if line 13 or 19 is a loss, use zero)
- E. Subtract line D from line C. Enter the result here and on Form 8615, line 1 . . . . . \_\_\_\_\_

**Investment income defined.** Investment income is generally all income other than salaries, wages, and other amounts received as pay for work actually done. It includes taxable interest, dividends, capital gains (including capital gain distributions), the taxable part of social security and pension payments, and certain distributions from trusts. Investment income includes amounts produced by assets the child obtained with earned income (such as interest on a savings account into which the child deposited wages).

**Nontaxable income.** For this purpose, investment income includes only amounts the

child must include in total income. Nontaxable investment income, such as tax-exempt interest and the nontaxable part of social security and pension payments, is not included.

**Capital loss.** A child's capital losses are taken into account in figuring the child's investment income. Capital losses are first applied against capital gains. If the capital losses are more than the capital gains, the difference (up to \$3,000) is subtracted from the child's interest, dividends, and other investment income. Any difference over \$3,000 is carried to the next year.

#### Income from property received as a gift.

A child's investment income includes all income produced by property belonging to the child. This is true even if the property was transferred to the child, regardless of when the property was transferred or purchased or who transferred it.

A child's investment income includes income produced by property given as a gift to the child. This includes gifts to the child from grandparents or any other person and gifts made under the Uniform Gift to Minors Act.

**Example.** Amanda Black, age 13, received the following income.

- Dividends—\$600
- Wages—\$2,100
- Taxable interest—\$1,200
- Tax-exempt interest—\$100
- Capital gains—\$300
- Capital losses—(\$200)

The dividends were qualified dividends on stock given to her by her grandparents.

Amanda's investment income is \$1,900. This is the total of the dividends (\$600), taxable interest (\$1,200), and capital gains reduced by capital losses (\$300 - \$200 = \$100). Her wages are earned (not investment) income because they are received for work actually done. Her tax-exempt interest is not included because it is nontaxable.

**Trust income.** If a child is the beneficiary of a trust, distributions of taxable interest, dividends, capital gains, and other investment income from the trust are investment income to the child.

However, taxable distributions from a qualified disability trust are considered earned income for the purposes of completing Form 8615. See the Form 8615 instructions for details.

**Adjustment to income.** In figuring the amount to enter on line 1, the child's investment income is reduced by any penalty on the early withdrawal of savings.

### Line 2 (Deductions)

If the child does not itemize deductions on Schedule A (Form 1040 or Form 1040NR), enter \$1,700 on line 2.

If the child does itemize deductions, enter on line 2 the larger of:

**Illustrated Part I of Form 8615**

Carla's total income on Form 1040A, line 15, is \$5,000. This total includes wages (earned income) of \$600 reported on line 7. She has no itemized deductions. Carla's taxable income on Form 1040A, line 27, is \$4,100. Because Carla has earned income, the worksheet in the instructions is used to figure the amount on line 1 of Form 8615.

Carla's filled-in worksheet and Part I of her Form 8615, with lines 1 through 5 filled in, are shown here.

Carla's total income of \$5,000 (as shown on line 15 of her Form 1040A) is entered on

line 1 of the worksheet. Her earned income of \$600 (her wages as shown on line 7 of her Form 1040A) is entered on line 2 of the worksheet. Line 3 is the result of subtracting \$600 from \$5,000.

The amount from line 3 of the worksheet is entered on line 1 of Form 8615. Carla did not itemize deductions, so \$1,700 is entered on line 2. Line 3 of Form 8615 is the result of subtracting \$1,700 from \$4,400. Carla's taxable income of \$4,100 (as shown on line 27 of her Form 1040A) is entered on line 4 of Form 8615. The smaller of \$2,700 or \$4,100 is entered on line 5. This is her net investment income.

**Worksheet—Line 1**

1. Enter the amount from the child's Form 1040, line 22; Form 1040A, line 15; or Form 1040NR, line 23, whichever applies . . . . .	5,000
2. Enter the child's earned income plus the amount of any penalty on early withdrawal of savings from the child's Form 1040, line 30; Form 1040A, line 16; or Form 1040NR, line 29, whichever applies . . . . .	600
3. Subtract line 2 from line 1. Enter the result here and on Form 8615, line 1 . . . . .	4,400

<p><b>Form 8615</b></p> <p>Department of the Treasury Internal Revenue Service (99)</p> <p>Child's name shown on return <i>Carla C. Rose</i></p>	<p><b>Tax for Children Under Age 18</b> <b>With Investment Income of More Than \$1,700</b></p> <p>▶ Attach only to the child's Form 1040, Form 1040A, or Form 1040NR. ▶ See separate instructions.</p>	<p>OMB No. 1545-0074</p> <p><b>2006</b></p> <p>Attachment Sequence No. <b>33</b></p> <p>Child's social security number 111 ; 0 0 ; 1111</p>
<p><b>Before you begin:</b> If the child, the parent, or any of the parent's other children under age 18 must use the Schedule D Tax Worksheet or has income from farming or fishing, see <b>Pub. 929</b>, Tax Rules for Children and Dependents. It explains how to figure the child's tax using the <b>Schedule D Tax Worksheet</b> or <b>Schedule J</b> (Form 1040).</p>		
<p><b>A</b> Parent's name (first, initial, and last). <b>Caution:</b> See instructions before completing. <i>George B. Rose</i></p>	<p><b>B</b> Parent's social security number 123 ; 0 0 ; 4 5 6 7</p>	
<p><b>C</b> Parent's filing status (check one):  <input type="checkbox"/> Single    <input checked="" type="checkbox"/> Married filing jointly    <input type="checkbox"/> Married filing separately    <input type="checkbox"/> Head of household    <input type="checkbox"/> Qualifying widow(er)</p>		

<b>Part I Child's Net Investment Income</b>		
1 Enter the child's investment income (see instructions) . . . . .	1	4,400
2 If the child <b>did not</b> itemize deductions on <b>Schedule A</b> (Form 1040 or Form 1040NR), enter \$1,700. Otherwise, see instructions . . . . .	2	1,700
3 Subtract line 2 from line 1. If zero or less, <b>stop</b> ; do not complete the rest of this form but <b>do</b> attach it to the child's return. . . . .	3	2,700
4 Enter the child's <b>taxable income</b> from Form 1040, line 43; Form 1040A, line 27; or Form 1040NR, line 40. If the child files Form 2555 or 2555-EZ, see the instructions . . . . .	4	4,100
5 Enter the <b>smaller</b> of line 3 or line 4. If zero, <b>stop</b> ; do not complete the rest of this form but <b>do</b> attach it to the child's return . . . . .	5	2,700

1. \$850 plus the child's itemized deductions that are directly connected with the production of the investment income entered on line 1, or
2. \$1,700.

**Directly connected.** Itemized deductions are directly connected with the production of investment income if they are for expenses paid to produce or collect taxable income or to manage, conserve, or maintain property held for producing income. These expenses include custodian fees and service charges, service fees to collect taxable interest and dividends, and certain investment counsel fees.

These expenses are added to certain other miscellaneous itemized deductions on Schedule A (Form 1040). Only the amount greater than 2% of the child's adjusted gross income can be deducted. See Publication 529, Miscellaneous Deductions, for more information.

**Example 1.** Roger, age 12, has investment income of \$8,000, no other income, no adjustments to income, and itemized deductions of \$300 (net of the 2%-of-adjusted-gross-income limit) that are directly connected with his investment income. His adjusted gross income is \$8,000, which is entered on Form 1040, line 38,

and on Form 8615, line 1. Line 2 is \$1,700 because that is more than the sum of \$850 and his directly-connected itemized deductions of \$300.

**Example 2.** Eleanor, age 8, has investment income of \$16,000 and an early withdrawal penalty of \$100. She has no other income. She has itemized deductions of \$1,050 (net of the 2%-of-adjusted-gross-income limit) that are directly connected with the production of her investment income. Her adjusted gross income, entered on line 1, is \$15,900 (\$16,000 – \$100). The amount on line 2 is \$1,900. This is the larger of:

1. \$850 plus the \$1,050 of directly connected itemized deductions, or
2. \$1,700.

**Line 3**

Subtract line 2 from line 1 and enter the result on this line. If zero or less, do not complete the rest of the form. However, you must still attach Form 8615 to the child's tax return. Figure the tax on the child's taxable income in the normal manner.

**Line 4 (Child's Taxable Income)**

Enter on line 4 the child's taxable income from Form 1040, line 43; Form 1040A, line 27; or Form 1040NR, line 40.

**Child files Form 2555 or 2555-EZ.** If the child files Form 2555 or 2555-EZ to claim the foreign earned income exclusion or housing exclusion, the Foreign Earned Income Tax Worksheet in the Form 1040 instructions must be used to figure the child's tax. When using Form 8615 to figure the amount to enter on line 8 of that worksheet, enter the amount from line 7 of the worksheet, instead of the child's taxable income on line 4 of Form 8615.

**Line 5 (Net Investment Income)**

A child's net investment income cannot be more than his or her taxable income. Enter on Form 8615, line 5, the smaller of line 3 or line 4. This is the child's net investment income.

If zero or less, do not complete the rest of the form. However, you must still attach Form 8615 to the child's tax return. Figure the tax on the child's taxable income in the normal manner.

## Illustrated Part II of Form 8615

Randy and his sister must each file Form 8615. Their parents' joint return information is used on the Forms 8615 of both children. The net investment income on line 5 of Randy's Form 8615 is \$2,280. His sister's net investment income is \$1,520. Randy's parents' taxable income is \$50,570. Their tax, from the Tax Table, is \$6,831.

Part II of Randy's Form 8615, with lines 6 through 13 filled in, is shown here.

Randy's parents' taxable income of \$50,570 (from line 43 of Form 1040) is entered on Form 8615, line 6.

Randy's sister's net investment income of \$1,520 (from line 5 of her Form 8615) is entered on line 7 of Randy's Form 8615. The amounts on line 5 (\$2,280), line 6 (\$50,570), and line 7 (\$1,520) are added and the total of \$54,370 is entered on line 8.

The tax on \$54,370 is found in the Tax Table using the parents' joint filing status. The tax, \$7,401, is entered on line 9. Randy's parents' tax of \$6,831 (from line 44 of Form 1040) is entered on line 10 and is subtracted from the amount on line 9. The difference, \$570, is entered on line 11.

Randy's net investment income on line 5 (\$2,280) is added to his sister's net investment income on line 7 (\$1,520) and the total, \$3,800, is entered on line 12a.

The amount on line 5 (\$2,280) is divided by the amount on line 12a (\$3,800) and the result, .600, is entered on line 12b.

The amount on line 11 (\$570) is multiplied by the amount on line 12b (.600) and the result, \$342, is entered on line 13. This is Randy's tentative tax based on his parents' tax rate.

### Part II Tentative Tax Based on the Tax Rate of the Parent

6	Enter the parent's <b>taxable income</b> from Form 1040, line 43; Form 1040A, line 27; Form 1040EZ, line 6; Form 1040NR, line 40; or Form 1040NR-EZ, line 14. If zero or less, enter -0-. If the parent files Form 2555 or 2555-EZ, see the instructions . . . . .	6	50,570
7	Enter the total, if any, from Forms 8615, line 5, of <b>all other</b> children of the parent named above. <b>Do not</b> include the amount from line 5 above. . . . .	7	1,520
8	Add lines 5, 6, and 7 (see instructions) . . . . .	8	54,370
9	Enter the tax on the amount on line 8 based on the <b>parent's</b> filing status above (see instructions). If the Qualified Dividends and Capital Gain Tax Worksheet, Schedule D Tax Worksheet, or Schedule J (Form 1040) is used to figure the tax, check here . . . . . <input type="checkbox"/>	9	7,401
10	Enter the parent's tax from Form 1040, line 44; Form 1040A, line 28, minus any alternative minimum tax; Form 1040EZ, line 11; Form 1040NR, line 41; or Form 1040NR-EZ, line 15. <b>Do not</b> include any tax from <b>Form 4972</b> or <b>8814</b> . If the Qualified Dividends and Capital Gain Tax Worksheet, Schedule D Tax Worksheet, or Schedule J (Form 1040) was used to figure the tax, check here . . . . . <input type="checkbox"/>	10	6,831
11	Subtract line 10 from line 9 and enter the result. If line 7 is blank, also enter this amount on line 13 and go to <b>Part III</b> . . . . .	11	570
12a	Add lines 5 and 7 . . . . .	12a	3,800
12b	Divide line 5 by line 12a. Enter the result as a decimal (rounded to at least three places) . . . . .	12b	x . 600
13	Multiply line 11 by line 12b . . . . .	13	342

## Step 2. Figuring a Tentative Tax at the Parent's Tax Rate (Form 8615, Part II)

The next step in completing Form 8615 is to figure a tentative tax on the child's net investment income at the parent's tax rate. The tentative tax at the parent's tax rate is the difference between the tax on the parent's taxable income figured with the child's net investment income (plus the net investment income of any other child whose Form 8615 includes the tax return information of that parent) and the tax figured without it.

When figuring the tentative tax at the parent's tax rate, do not refigure any of the exclusions, deductions, or credits on the parent's return because of the child's net investment income. For example, do not refigure the medical expense deduction.

Figure the tentative tax on lines 6 through 13. For an example, see the Illustrated Part II of Form 8615.

### Line 6 (Parent's Taxable Income)

Enter on line 6 the amount from the parent's Form 1040, line 43; Form 1040A, line 27; Form 1040EZ, line 6; Form 1040NR, line 40; or Form 1040NR-EZ, line 14. If the parent's taxable income is zero or less, enter zero on line 6.

**Parent files Form 2555 or 2555-EZ.** If the parent files Form 2555 or 2555-EZ, the Foreign Earned Income Tax Worksheet in the Form 1040 instructions must be used to figure the

parents' tax. Enter the amount from line 7 of the parent's Foreign Earned Income Tax Worksheet instead of the parent's taxable income, on line 6 of Form 8615.

### Line 7 (Net Investment Income of Other Children)

If the tax return information of the parent is also used on any other child's Form 8615, enter on line 7 the total of the amounts from line 5 of all the other children's Forms 8615. Do not include the amount from line 5 of the Form 8615 being completed.

**Example.** Paul and Jane Persimmon have three children, Sharon, Jerry, and Mike, who must attach Form 8615 to their tax returns. The children's net investment income amounts on line 5 of their Forms 8615 are:

- Sharon—\$800
- Jerry—\$600
- Mike—\$1,000

Line 7 of Sharon's Form 8615 will show \$1,600, the total of the amounts on line 5 of Jerry's and Mike's Forms 8615.

Line 7 of Jerry's Form 8615 will show \$1,800 (\$800 + \$1,000).

Line 7 of Mike's Form 8615 will show \$1,400 (\$800 + \$600).

**Other children's information not available.** If the net investment income of the other children is not available when the return is due, either file

the return using estimates or get an extension of time to file. Estimates and extensions are discussed earlier under *Providing Parental Information (Form 8615, Lines A–C)*.

### Line 8 (Parent's Taxable Income Plus Children's Net Investment Income)

Enter on this line the total of lines 5, 6, and 7. You must determine the amount of net capital gain and qualified dividends included on this line before completing line 9 of Form 8615.

**Net capital gain.** Net capital gain is the smaller of the gain, if any, on Schedule D, line 15, or the gain, if any, on Schedule D, line 16. If Schedule D is not required, it is the amount on Form 1040, line 13; Form 1040A, line 10; or Form 1040NR, line 14.

**Qualified dividends.** Qualified dividends are those dividends reported on line 9b of Form 1040 or Form 1040A, or line 10b of Form 1040NR.

**Net capital gain and qualified dividends on line 8.** If neither the child nor the parent nor any other child has net capital gain, the net capital gain on line 8 is zero.

If neither the child, nor the parent, nor any other child has qualified dividends, the amount of qualified dividends on line 8 is zero.

If the child, parent, or any other child has net capital gain, figure the amount of net capital gain included on line 8 by adding together the net capital gain amounts included on lines 5, 6, and

7 of Form 8615. If the child, parent, or any other child has qualified dividends, figure the amount of qualified dividends included on line 8 by adding together the qualified dividend amounts included on lines 5, 6, and 7. Use the instructions for Form 8615, line 8, including the appropriate Line 5 Worksheet, to find these amounts.

**Line 9 (Tax on Parent’s Taxable Income Plus Children’s Net Investment Income)**

Figure the tax on the amount on line 8 using the Tax Table, the Tax Computation Worksheet, the Qualified Dividends and Capital Gain Tax Worksheet (in the Form 1040, 1040A, or 1040NR instructions), the Schedule D Tax Worksheet (in the Schedule D instructions) or Schedule J (Form 1040), as follows.

- If line 8 does not include any net capital gain or qualified dividends, use the Tax Table or Tax Computation Worksheet to figure this tax. But if Schedule J, Income Averaging for Farmers and Fishermen, is used to figure the tax on the parent’s return, use it to figure this tax.
- If line 8 does include any net capital gain or qualified dividends, use the Qualified Dividends and Capital Gain Tax Worksheet to figure this tax. For details, see the instructions for Form 8615, line 9. However, if the child, parent, or another child has 28% rate gain or unrecaptured section 1250 gain, use the Schedule D Tax Worksheet. But if Schedule J is used to figure the tax on the parent’s return, use it to figure this tax.

**Using the Schedule D Tax Worksheet for line 9 tax.** Use the Schedule D Tax Worksheet in the Schedule D instructions to figure the line 9 tax on Form 8615 if the child, parent, or any other child has unrecaptured section 1250 gain or 28% rate gain. If you must use the Schedule D Tax Worksheet, first complete any Schedule D and any actual Schedule D Tax Worksheet required for the child, parent, or any other child. Then figure the line 9 tax using another Schedule D Tax Worksheet. (Do not attach this Schedule D Tax Worksheet to the child’s return.)

Complete this Schedule D Tax Worksheet as follows.

1. On line 1, enter the amount from Form 8615, line 8.
2. On line 2, enter the qualified dividends included on Form 8615, line 8. (See the earlier discussion for line 8.)
3. On line 3, enter the total of the amounts, if any, on line 4g of all Forms 4952 filed by the child, parent, or any other child.
4. On line 4, enter the total of the amounts, if any, on line 4e of all Forms 4952 filed by the child, parent, or any other child. If applicable, include instead the smaller amount entered on the dotted line next to line 4e.
5. On lines 5 and 6, follow the worksheet instructions.

6. On line 7, enter the net capital gain included on Form 8615, line 8. (See the earlier discussion for line 8.)
7. On lines 8 through 10, follow the worksheet instructions.
8. On line 11, enter zero if neither the child, parent, nor any other child has unrecaptured section 1250 gain (line 19 of Schedule D) or 28% rate gain (line 18 of Schedule D). Otherwise, enter the amount of unrecaptured section 1250 gain and 28% rate gain included in the net capital gain on line 8 of Form 8615. Figure these amounts as explained later under *Figuring unrecaptured section 1250 gain (line 11)* and *Figuring 28% rate gain (line 11)*.
9. Complete lines 12 through 37, following the worksheet instructions. Use the parent’s filing status to complete lines 15, 34, and 36.

Enter the amount from line 37 of this Schedule D Tax Worksheet on Form 8615, line 9, and check the box on that line.

**Figuring 28% rate gain (line 11).** If the child, parent, or any other child has 28% rate gain, figure the amount of 28% rate gain included in the net capital gain on line 8 of Form 8615 using the following worksheet.

**Worksheet 1 for Line 11 of the Schedule D Tax Worksheet – 28% Rate Gain (Line 9 Tax)**

1. Enter the amount, if any, from the child’s Schedule D, line 18. . . . . \_\_\_\_\_

**If line 1 is zero or blank, skip lines 2 through 4, enter -0- on line 5, and go to line 6.**

2. Enter the amount from the last line of the child’s completed *Line 5 Worksheet* in the instructions for Form 8615, line 8 \_\_\_\_\_
3. Enter the amount from line 2 of the child’s completed *Line 5 Worksheet*. . . . . \_\_\_\_\_
4. Divide line 2 by line 3. Enter the result as a decimal . . . . . \_\_\_\_\_
5. Multiply line 1 by line 4 . . . . . \_\_\_\_\_
6. If no other child has 28% rate gain, enter -0-. Otherwise, repeat lines 1 through 5 above for each other child who has 28% rate gain and enter the total of the line 5 amounts for those other children . . . . . \_\_\_\_\_
7. Enter the amount, if any, from line 18 of the parent’s Schedule D. . . \_\_\_\_\_
8. Add lines 5, 6, and 7. Also include this amount on the *Schedule D Tax Worksheet*, line 11. . . . . \_\_\_\_\_

**Figuring unrecaptured section 1250 gain (line 11).** If the child, parent, or any other child has unrecaptured section 1250 gain, figure the amount of unrecaptured section 1250 gain included in the net capital gain on line 8 of Form 8615 using the following worksheet.

**Worksheet 2 for Line 11 of the Schedule D Tax Worksheet – Unrecaptured Section 1250 Gain (Line 9 Tax)**

1. Enter the amount, if any, from the child’s Schedule D, line 19. . . . . \_\_\_\_\_  
**If line 1 is zero or blank, skip lines 2 through 4, enter -0- on line 5, and go to line 6.**
2. Enter the amount, if any, from the last line of the child’s completed *Line 5 Worksheet* in the instructions for Form 8615, line 8 . . . . . \_\_\_\_\_
3. Enter the amount from line 2 of the child’s completed *Line 5 Worksheet* . . . . . \_\_\_\_\_
4. Divide line 2 by line 3. Enter the result as a decimal . . . . . \_\_\_\_\_
5. Multiply line 1 by line 4 . . . . . \_\_\_\_\_
6. If no other child has unrecaptured section 1250 gain, enter -0-. Otherwise, repeat lines 1 through 5 for each other child who has unrecaptured section 1250 gain and enter the total of the line 5 amounts for those children . . . . . \_\_\_\_\_
7. Enter the amount, if any, from line 19 of the parent’s Schedule D. . . \_\_\_\_\_
8. Add lines 5, 6, and 7. Also include this amount on the *Schedule D Tax Worksheet*, line 11. . . . . \_\_\_\_\_

**Using Schedule J for line 9 tax.** Use Schedule J, Income Averaging for Farmers and Fishermen, to figure the line 9 tax on Form 8615 if Schedule J is used to figure the tax on the parent’s return. First complete the actual Schedule J for the parent, then use another Schedule J as a worksheet to figure the tax to enter on line 9 of Form 8615. (Do not attach this worksheet to the child’s return.)

Complete this worksheet Schedule J as follows.

1. On line 1, enter the amount from Form 8615, line 8.
2. On line 2, enter the amount from the parent’s Schedule J, line 2.
3. Complete line 3 following the Schedule J instructions.
4. Complete line 4. If Form 8615, line 8, includes any net capital gain, use the Qualified Dividends and Capital Gain Tax Worksheet to figure the tax amount on this line. For details on how to use the worksheet, see the instructions for Form 8615, line 9, but use the amount on line 3 of this worksheet Schedule J (instead of the amount on Form 8615, line 8) in step (1) of *Using the Qualified Dividends and Capital Gain Tax Worksheet for line 9 tax*. However, if the child, parent, or any other child has 28% rate gain, or unrecaptured section 1250 gain, use the Schedule D Tax Worksheet. Follow the earlier instructions under *Using the Schedule D Tax Worksheet for line 9 tax*, except use the amount

on line 3 of this worksheet Schedule J (instead of the amount on Form 8615, line 8) in step (1).

- On lines 5 through 16, enter the amounts from the parent's Schedule J, lines 5 through 16.
- Complete line 17 following the Schedule J instructions.
- On lines 18 through 21, enter the amounts from the parent's Schedule J, lines 18 through 21.
- Complete line 22 following the Schedule J instructions.

Enter the amount from line 22 of this worksheet Schedule J on Form 8615, line 9, and check the box on that line.

### Line 10 (Parent's Tax)

Enter on line 10 the amount from the parent's Form 1040, line 44; Form 1040A, line 28 (minus any alternative minimum tax); Form 1040EZ, line 11; Form 1040NR, line 41; or Form 1040NR-EZ, line 15. Do not include the tax, if any, from Form 4972 or Form 8814.

If the parent files Form 2555 or 2555-EZ, enter the amount from line 8 of the parent's Foreign Earned Income Tax Worksheet (in the Form 1040 instructions), instead of the parent's tax from Form 1040, line 44.

### Line 11 (Tentative Tax)

Subtract line 10 from line 9 and enter the result on this line. This is the tentative tax.

If line 7 is blank, skip lines 12a and 12b and enter the amount from line 11 on line 13. Also skip the discussion for lines 12a and 12b that follows.

### Lines 12a and 12b (Dividing the Tentative Tax)

If an amount is entered on line 7, divide the tentative tax shown on line 11 among the children according to each child's share of the total net investment income. This is done on lines 12a, 12b, and 13. Add the amount on line 7 to the amount on line 5 and enter the total on line 12a. Divide the amount on line 5 by the amount on line 12a and enter the result, as a decimal, on line 12b.

**Example.** In the earlier example under *Line 7 (Net Investment Income of Other Children)*, Sharon's Form 8615 shows \$1,600 on line 7. The amount entered on line 12a is \$2,400, the total of the amounts on lines 5 and 7 (\$800 + \$1,600). The decimal on line 12b is .333, figured as follows and rounded to three places.

$$\frac{\$800}{\$2,400} = .333$$

### Line 13 (Child's Share of Tentative Tax)

If an amount is entered on line 7, multiply line 11 by the decimal on line 12b and enter the result on line 13. This is the child's share of the tentative tax.

### Step 3. Figuring the Child's Tax

The final step in figuring a child's tax using Form 8615 is to determine the larger of:

- The total of:
  - The child's share of the tentative tax based on the parent's tax rate, plus
  - The tax on the child's taxable income in excess of net investment income, figured at the child's tax rate, or
- The tax on the child's taxable income, figured at the child's tax rate.

This is the child's tax. It is figured on Form 8615, lines 14 through 18.

### Line 14 (Child's Taxable Income in Excess of Net Investment Income)

If lines 4 and 5 of Form 8615 are the same, the child's taxable income is not more than the child's net investment income. Enter zero on lines 14 and 15, and go to line 16. Also skip the rest of this discussion and the discussion for line 15 that follows.

If lines 4 and 5 are not the same, subtract line 5 from line 4 and enter the result on line 14. Then, before completing line 15, you must determine the amount of net capital gain and qualified dividends, if any, included on line 14.

**Net capital gain and qualified dividends on line 14.** If the child does not have any net capital gain or qualified dividends, the amount of the net capital gain and qualified dividends included on line 14 is zero.

If the child has net capital gain, the amount of net capital gain included on line 14 is the amount from line 2 of the child's completed Line 5 Worksheet minus the amount from the last line of that worksheet. (See the earlier discussion for line 8 of Form 8615.)

If the child has qualified dividends, the amount of qualified dividends included on line 14 is the amount from line 1 of the child's completed Line 5 Worksheet minus the amount from the next to the last line of that worksheet. (See the earlier discussion of line 8 of Form 8615.)

### Line 15 (Tax on Child's Taxable Income in Excess of Net Investment Income)

Figure the tax on the amount on line 14 using the Tax Table, the Tax Computation Worksheet, the Qualified Dividends and Capital Gain Tax Worksheet, the Schedule D Tax Worksheet, or Schedule J (Form 1040), as follows.

- If line 14 does not include any net capital gain or qualified dividends, use the Tax

Table or Tax Computation Worksheet (or Schedule J, if applicable) to figure this tax.

- If line 14 does include any net capital gain or qualified dividends, use the Qualified Dividends and Capital Gain Tax Worksheet to figure this tax. For details, see the instructions for Form 8615, line 15. However, if the child has 28% rate gain or unrecaptured section 1250 gain, use the Schedule D Tax Worksheet. (But use Schedule J instead, if it applies.)

**Using the Schedule D Tax Worksheet for line 15 tax.** Use the Schedule D Tax Worksheet in the Schedule D instructions to figure the line 15 tax on Form 8615 if the child has unrecaptured section 1250 gain or 28% rate gain. Do not attach this Schedule D Tax Worksheet to the child's return.

Complete this Schedule D Tax Worksheet as follows.

- On line 1, enter the amount from Form 8615, line 14.
- On line 2, enter the qualified dividends included on Form 8615, line 14. (See the earlier discussion for line 14.)
- Leave lines 3 through 5 blank.
- Enter the amount from line 2 on line 6.
- On line 7, enter the net capital gain included on Form 8615, line 14. (See the earlier discussion for line 14.)
- Skip line 8.
- Enter the amount from line 7 on line 9.
- Complete line 10, following the worksheet instructions.
- On line 11, enter zero if the child has no 28% rate gain (Schedule D, line 18) or unrecaptured section 1250 gain (Schedule D, line 19). Otherwise, see Worksheet 1 for Line 11 of the Schedule D Tax Worksheet – 28% Rate Gain (Line 9 Tax) and Worksheet 2 for Line 11 of the Schedule D Tax Worksheet – Unrecaptured Section 1250 Gain (Line 9 Tax) under *Using the Schedule D Tax Worksheet for line 9 tax*, earlier. For each worksheet you complete, subtract line 5 of that worksheet from line 1 of that worksheet, and include the result on line 11 of this worksheet.
- Complete lines 12 through 37, following the worksheet instructions. Use the child's filing status to complete lines 15, 34, and 36.

Enter the amount from line 37 of this Schedule D Tax Worksheet on Form 8615, line 15, and check the box on that line.

**Using Schedule J for line 15 tax.** If Schedule J applies, use it as a worksheet to figure the tax to enter on Form 8615, line 15. On line 1 of this worksheet, enter the amount from Form 8615, line 14. Complete lines 2 through 22 following the Schedule J instructions. Use the child's filing status to complete lines 4, 8, 12, and 16.

Enter the amount from line 22 of this worksheet Schedule J, on Form 8615, line 15, and check the box on that line. Do not attach this worksheet to the child's return.

## Line 16 (Combined Tax)

Add lines 13 and 15 and enter the total on line 16. This is the child's tax figured at the parent's rate on net investment income and the child's rate on other income.

## Line 17 (Tax at Child's Rate)

Figure the tax on line 4 (the child's taxable income). Use the Tax Table, the Tax Computation Worksheet, the Qualified Dividends and Capital Gain Tax Worksheet, the Schedule D Tax Worksheet, or the child's actual Schedule J, whichever applies. Enter the tax amount on line 17. If it is from the Qualified Dividends and Capital Gain Tax Worksheet, the Schedule D Tax Worksheet, or Schedule J, check the box on that line.

## Line 18 (Tax)

Enter on line 18 the larger of line 16 or line 17. Also enter this amount on the child's Form 1040, line 44; Form 1040A, line 28; or Form 1040NR, line 41. This is the child's tax.

**Child files Form 2555 or 2555-EZ.** If the child files Form 2555 or 2555-EZ, do **not** enter the amount from Form 8615, line 18, on the child's Form 1040, line 44. Instead, enter the amount from Form 8615, line 18, on line 8 of the child's Foreign Earned Income Tax Worksheet (in the Form 1040 instructions). Then complete the rest of the Foreign Earned Income Tax Worksheet. Enter the amount from line 10 of the worksheet on the child's Form 1040, line 44.

## Alternative Minimum Tax

A child may be subject to alternative minimum tax (AMT) if he or she has certain items given preferential treatment under the tax law. These items include accelerated depreciation and certain tax-exempt interest income. The AMT may also apply if the child has passive activity losses or certain distributions from estates or trusts.

For more information on who is liable for AMT and how to figure it, get Form 6251.

**Limit on exemption amount.** Ordinarily, single people can subtract a \$42,500 exemption amount from their AMT taxable income. However, a child who files Form 8615 has a limited exemption amount. The child's exemption amount for 2006 is limited to the child's earned income plus \$6,050. Figure the child's allowable exemption amount on the worksheet in the instructions for Form 6251, line 29.

## Illustrated Example

This example shows how to fill out Forms 8615 and 1040A for Sara Brown. It also shows how to use the Qualified Dividends and Capital Gain Tax Worksheet in the Form 1040A instructions to figure Sara's tax.

John and Laura Brown have one child, Sara. She is 13 and has \$1,050 taxable interest, \$1,050 qualified dividend income, \$700 capital gain distributions, and \$1,550 earned income. She does not itemize deductions. John and Laura file a joint return with John's name and social security number listed first. They claim

three exemptions, including an exemption for Sara, on their return.

Because she is under age 18 and has more than \$1,700 investment income, part of her income may be subject to tax at her parents' rate. A completed Form 8615 must be attached to her return.

Sara's father, John, fills out Sara's return. He completes her Form 1040A through line 27, then begins completing her Form 8615.

John enters his name and social security number on Sara's Form 8615 because his name and number are listed first on the joint return he and Laura are filing. He checks the box for married filing jointly.

He enters Sara's investment income, \$2,800, on line 1. Sara does not itemize deductions, so John enters \$1,700 on line 2. He enters \$1,100 (\$2,800 - \$1,700) on line 3.

Sara's taxable income, as shown on her Form 1040A, line 27, is \$2,500. This is her total income (\$4,350) minus her standard deduction (\$1,850). Her standard deduction is limited to the amount of her earned income plus \$300. John enters \$2,500 on line 4.

John compares lines 3 and 4 and enters the smaller amount, \$1,100, on line 5.

John enters \$48,000 on line 6. This is the taxable income from line 43 of John and Laura's joint Form 1040 return. Sara is an only child, so line 7 is blank. He adds line 5 (\$1,100), line 6 (\$48,000), and line 7 (blank) and enters \$49,100 on line 8.

Because Sara's capital gain distributions and qualified dividends are included on line 5, John uses Line 5 Worksheet #1 (in the instructions for Form 8615) to figure out that \$275 net capital gain and \$412 qualified dividends are included on line 5. He completes that worksheet as follows.

### Line 5 Worksheet #1

1. Enter the child's qualified dividends . . . . .	\$1,050
2. Enter the child's net capital gain . . . . .	700
3. Enter the amount from the child's Form 8615, line 1 . . . . .	2,800
4. Divide line 1 by line 3. Enter the result as a decimal (rounded to at least 3 places). Do not enter more than 1.000 . . . . .	.375
5. Divide line 2 by line 3. Enter the result as a decimal (rounded to at least 3 places). Do not enter more than 1.000 . . . . .	.250
6. Multiply \$1,700 by line 4 . . . . .	638
7. Multiply \$1,700 by line 5 . . . . .	425
8. <b>Qualified dividends on Form 8615, line 5.</b> Subtract line 6 from line 1 (but do not enter less than zero or more than the amount on Form 8615, line 5) . . . . .	412
9. <b>Net capital gain on Form 8615, line 5.</b> Subtract line 7 from line 2 (but do not enter less than zero or more than the excess of Form 8615, line 5, over line 8 of this worksheet) . . . . .	275

Sara's parents do not have a net capital gain or any qualified dividends, so no net capital gain or qualified dividends are on line 6 of Sara's Form 8615. Therefore, the amount of net capital gain on line 8 of Sara's Form 8615 is \$275, and the amount of qualified dividends on that line is \$412. John uses the Qualified Dividends and Capital Gain Tax Worksheet (in the Form 1040A instructions) and follows the instructions under *Using the Qualified Dividends and Capital Gain Tax Worksheet for line 9 tax* in the Form 8615 instructions to figure the tax to enter on Sara's Form 8615, line 9.

John enters \$412 on line 2 of the Qualified Dividends and Capital Gain Tax Worksheet, and \$275 on line 3 of that worksheet. That completed worksheet is shown later as Filled-in Qualified Dividends and Capital Gain Tax Worksheet #1. John enters the tax of \$6,543 on Sara's Form 8615, line 9.

He enters the tax from his and Laura's Form 1040 (\$6,449) on Sara's Form 8615, line 10, then subtracts that amount from the \$6,543 on line 9, and enters the \$94 remainder on line 11. Because line 7 is blank, John skips lines 12a and 12b and enters \$94 on line 13.

John subtracts line 5 (\$1,100) from line 4 (\$2,500) and enters the result, \$1,400, on line 14. Using the instructions for line 14 earlier, John subtracts the net capital gain included on line 5 (\$275) from Sara's net capital gain (\$700) to figure the \$425 net capital gain included on line 14. He also subtracts the qualified dividends included on line 5 (\$412) from Sara's qualified dividends (\$1,050) to figure the \$638 qualified dividends included on line 14. He uses another Qualified Dividends and Capital Gain Tax Worksheet and follows the instructions under *Using the Qualified Dividends and Capital Gain Tax Worksheet for line 15 tax*, in the Form 8615 instructions, to figure the \$87 tax to enter on Form 8615, line 15. That completed worksheet is shown later as Filled-in Qualified Dividends and Capital Gain Tax Worksheet #2.

John adds lines 13 and 15 of Form 8615, and enters the sum, \$181, on line 16. Then he uses another Qualified Dividends and Capital Gain Tax Worksheet to figure the \$164 tax on Sara's \$2,500 taxable income to enter on Form 8615, line 17. That completed worksheet is shown later as Filled-in Qualified Dividends and Capital Gain Tax Worksheet #3.

Finally, John compares lines 16 and 17 and enters the larger amount, \$181, on line 18 of Sara's Form 8615. He also enters that amount on Sara's Form 1040A, line 28.

John also completes Schedule 1, Form 1040A (not shown) for Sara.



**Label**

(See page 18.)

**Use the IRS label.**

Otherwise, please print or type.

LABEL HERE	Your first name and initial Sara L	Last name Brown	OMB No. 1545-0074
	If a joint return, spouse's first name and initial	Last name	Your social security number 111 00 1111
	Home address (number and street). If you have a P.O. box, see page 18. 1040A MAIN STREET		Spouse's social security number : : : :
	City, town or post office, state, and ZIP code. If you have a foreign address, see page 18. HOMETOWN AZ 85240		Apt. no. : : :

▲ You must enter your SSN(s) above. ▲

Checking a box below will not change your tax or refund.

**Presidential Election Campaign**

Check here if you, or your spouse if filing jointly, want \$3 to go to this fund (see page 18)  **You**  **Spouse**

**Filing status**

Check only one box.

- 1  Single
- 2  Married filing jointly (even if only one had income)
- 3  Married filing separately. Enter spouse's SSN above and full name here. ▶
- 4  Head of household (with qualifying person). (See page 19.) If the qualifying person is a child but not your dependent, enter this child's name here. ▶
- 5  Qualifying widow(er) with dependent child (see page 20)

**Exemptions**

6a  **Yourself.** If someone can claim you as a dependent, do not check box 6a.

b  **Spouse**

**c Dependents:**

(1) First name	Last name	(2) Dependent's social security number	(3) Dependent's relationship to you	(4) <input checked="" type="checkbox"/> If qualifying child for child tax credit (see page 21)
				<input type="checkbox"/>
				<input type="checkbox"/>
				<input type="checkbox"/>
				<input type="checkbox"/>
				<input type="checkbox"/>

If more than six dependents, see page 21.

**Boxes checked on 6a and 6b** \_\_\_\_\_

**No. of children on 6c who:**

- lived with you \_\_\_\_\_
- did not live with you due to divorce or separation (see page 22) \_\_\_\_\_

**Dependents on 6c not entered above** \_\_\_\_\_

d Total number of exemptions claimed. Add numbers on lines above ▶

**Income**

**Attach Form(s) W-2 here. Also attach Form(s) 1099-R if tax was withheld.**

If you did not get a W-2, see page 24.

Enclose, but do not attach, any payment.

<b>7</b> Wages, salaries, tips, etc. Attach Form(s) W-2.	7	1,550
<b>8a</b> Taxable interest. Attach Schedule 1 if required.	8a	1,050
<b>b</b> Tax-exempt interest. Do not include on line 8a.	8b	
<b>9a</b> Ordinary dividends. Attach Schedule 1 if required.	9a	1,050
<b>b</b> Qualified dividends (see page 25).	9b	1,050
<b>10</b> Capital gain distributions (see page 25).	10	700
<b>11a</b> IRA distributions.	11a	
<b>11b</b> Taxable amount (see page 25).	11b	
<b>12a</b> Pensions and annuities.	12a	
<b>12b</b> Taxable amount (see page 26).	12b	
<b>13</b> Unemployment compensation, Alaska Permanent Fund dividends, and jury duty pay.	13	
<b>14a</b> Social security benefits.	14a	
<b>14b</b> Taxable amount (see page 28).	14b	
<b>15</b> Add lines 7 through 14b (far right column). This is your <b>total income</b> .	15	4,350

**Adjusted gross income**

<b>16</b> Penalty on early withdrawal of savings (see page 28).	16	
<b>17</b> IRA deduction (see page 28).	17	
<b>18</b> Student loan interest deduction (see page 31).	18	
<b>19</b> Jury duty pay you gave your employer (see page 31).	19	
<b>20</b> Add lines 16 through 19. These are your <b>total adjustments</b> .	20	
<b>21</b> Subtract line 20 from line 15. This is your <b>adjusted gross income</b> .	21	4,350

<b>Tax, credits, and payments</b>	<b>22</b> Enter the amount from line 21 (adjusted gross income).	22	4,350	
	<b>23a</b> Check if: <input type="checkbox"/> You were born before January 2, 1942, <input type="checkbox"/> Blind } <b>Total boxes checked</b> <input type="checkbox"/> <b>23a</b> <input type="checkbox"/>			
	<b>b</b> If you are married filing separately and your spouse itemizes deductions, see page 32 and check here <b>23b</b> <input type="checkbox"/>			
	<b>24</b> Enter your <b>standard deduction</b> (see left margin).	24	1,850	
	<b>25</b> Subtract line 24 from line 22. If line 24 is more than line 22, enter -0-.	25	2,500	
	<b>26</b> If line 22 is over \$112,875, or you provided housing to a person displaced by Hurricane Katrina, see page 32. Otherwise, multiply \$3,300 by the total number of exemptions claimed on line 6d.	26		
	<b>27</b> Subtract line 26 from line 25. If line 26 is more than line 25, enter -0-. This is your <b>taxable income</b> .	27	2,500	
	<b>28</b> Tax, including any alternative minimum tax (see page 32).	28	181	
	<b>29</b> Credit for child and dependent care expenses. Attach Schedule 2.	29		
	<b>30</b> Credit for the elderly or the disabled. Attach Schedule 3.	30		
	<b>31</b> Education credits. Attach Form 8863.	31		
	<b>32</b> Retirement savings contributions credit. Attach Form 8880.	32		
	<b>33</b> Child tax credit (see page 37). Attach Form 8901 if required.	33		
	<b>34</b> Add lines 29 through 33. These are your <b>total credits</b> .	34		
	<b>35</b> Subtract line 34 from line 28. If line 34 is more than line 28, enter -0-.	35	181	
	<b>36</b> Advance earned income credit payments from Form(s) W-2, box 9.	36		
	<b>37</b> Add lines 35 and 36. This is your <b>total tax</b> .	37	181	
	<b>38</b> Federal income tax withheld from Forms W-2 and 1099.	38	155	
	<b>39</b> 2006 estimated tax payments and amount applied from 2005 return.	39	100	
	<b>40a</b> <b>Earned income credit (EIC)</b> .	40a		
	<b>b</b> Nontaxable combat pay election. <b>40b</b>			
	<b>41</b> Additional child tax credit. Attach Form 8812.	41		
	<b>42</b> Credit for federal telephone excise tax paid. Attach Form 8913 if required.	42		
	<b>43</b> Add lines 38, 39, 40a, 41, and 42. These are your <b>total payments</b> .	43	255	
<b>Refund</b>	<b>44</b> If line 43 is more than line 37, subtract line 37 from line 43. This is the amount you <b>overpaid</b> .	44	74	
	<b>45a</b> Amount of line 44 you want <b>refunded to you</b> . If Form 8888 is attached, check here <input type="checkbox"/> <b>45a</b> 74			
	<b>b</b> Routing number <input type="text" value="090000000"/> <b>c</b> Type: <input type="checkbox"/> Checking <input checked="" type="checkbox"/> Savings			
	<b>d</b> Account number <input type="text" value="123456789"/>			
	<b>46</b> Amount of line 44 you want <b>applied to your 2007 estimated tax</b> .	46		
<b>Amount you owe</b>	<b>47</b> <b>Amount you owe</b> . Subtract line 43 from line 37. For details on how to pay, see page 54.	47		
	<b>48</b> Estimated tax penalty (see page 54).	48		

**Third party designee** Do you want to allow another person to discuss this return with the IRS (see page 55)?  **Yes**. Complete the following.  **No**

Designee's name **John Brown** Phone no. **(800) 829-1040** Personal identification number (PIN)

**Sign here** Under penalties of perjury, I declare that I have examined this return and accompanying schedules and statements, and to the best of my knowledge and belief, they are true, correct, and accurately list all amounts and sources of income I received during the tax year. Declaration of preparer (other than the taxpayer) is based on all information of which the preparer has any knowledge.

Joint return? See page 18. Keep a copy for your records.	Your signature <b>Sara L. Brown</b>	Date <b>2-15-07</b>	Your occupation <b>Student</b>	Daytime phone number <b>(800) 829-1040</b>
	Spouse's signature. If a joint return, <b>both</b> must sign.	Date	Spouse's occupation	

**Paid preparer's use only**

Preparer's signature  Date  Check if self-employed  Preparer's SSN or PTIN

Firm's name (or yours if self-employed), address, and ZIP code  EIN  Phone no. (  )

**Tax for Children Under Age 18**  
**With Investment Income of More Than \$1,700**  
 ▶ Attach only to the child's Form 1040, Form 1040A, or Form 1040NR.  
 ▶ See separate instructions.

Child's name shown on return

Sara L. Brown

Child's social security number  
 111 ; 00 ; 1111

**Before you begin:** If the child, the parent, or any of the parent's other children under age 18 must use the Schedule D Tax Worksheet or has income from farming or fishing, see **Pub. 929**, Tax Rules for Children and Dependents. It explains how to figure the child's tax using the **Schedule D Tax Worksheet** or **Schedule J** (Form 1040).

**A** Parent's name (first, initial, and last). **Caution:** See instructions before completing.  
 John J. Brown

**B** Parent's social security number  
 000 ; 00 ; 0001

**C** Parent's filing status (check one):  
 Single  Married filing jointly  Married filing separately  Head of household  Qualifying widow(er)

**Part I Child's Net Investment Income**

1	Enter the child's investment income (see instructions)	1	2,800
2	If the child <b>did not</b> itemize deductions on <b>Schedule A</b> (Form 1040 or Form 1040NR), enter \$1,700. Otherwise, see instructions	2	1,700
3	Subtract line 2 from line 1. If zero or less, <b>stop</b> ; do not complete the rest of this form but <b>do</b> attach it to the child's return	3	1,100
4	Enter the child's <b>taxable income</b> from Form 1040, line 43; Form 1040A, line 27; or Form 1040NR, line 40. If the child files Form 2555 or 2555-EZ, see the instructions	4	2,500
5	Enter the <b>smaller</b> of line 3 or line 4. If zero, <b>stop</b> ; do not complete the rest of this form but <b>do</b> attach it to the child's return	5	1,100

**Part II Tentative Tax Based on the Tax Rate of the Parent**

6	Enter the parent's <b>taxable income</b> from Form 1040, line 43; Form 1040A, line 27; Form 1040EZ, line 6; Form 1040NR, line 40; or Form 1040NR-EZ, line 14. If zero or less, enter -0-. If the parent files Form 2555 or 2555-EZ, see the instructions	6	48,000
7	Enter the total, if any, from Forms 8615, line 5, of <b>all other</b> children of the parent named above. <b>Do not</b> include the amount from line 5 above	7	
8	Add lines 5, 6, and 7 (see instructions)	8	49,100
9	Enter the tax on the amount on line 8 based on the <b>parent's</b> filing status above (see instructions). If the Qualified Dividends and Capital Gain Tax Worksheet, Schedule D Tax Worksheet, or Schedule J (Form 1040) is used to figure the tax, check here <input checked="" type="checkbox"/>	9	6,543
10	Enter the parent's tax from Form 1040, line 44; Form 1040A, line 28, minus any alternative minimum tax; Form 1040EZ, line 11; Form 1040NR, line 41; or Form 1040NR-EZ, line 15. <b>Do not</b> include any tax from <b>Form 4972</b> or <b>8814</b> . If the parent files Form 2555 or 2555-EZ, see the instructions. If the Qualified Dividends and Capital Gain Tax Worksheet, Schedule D Tax Worksheet, or Schedule J (Form 1040) was used to figure the tax, check here <input type="checkbox"/>	10	6,449
11	Subtract line 10 from line 9 and enter the result. If line 7 is blank, also enter this amount on line 13 and go to <b>Part III</b>	11	94
12a	Add lines 5 and 7	12a	
b	Divide line 5 by line 12a. Enter the result as a decimal (rounded to at least three places)	12b	×
13	Multiply line 11 by line 12b	13	94

**Part III Child's Tax**—If lines 4 and 5 above are the same, enter -0- on line 15 and go to line 16.

14	Subtract line 5 from line 4	14	1,400
15	Enter the tax on the amount on line 14 based on the <b>child's</b> filing status (see instructions). If the Qualified Dividends and Capital Gain Tax Worksheet, Schedule D Tax Worksheet, or Schedule J (Form 1040) is used to figure the tax, check here <input checked="" type="checkbox"/>	15	87
16	Add lines 13 and 15	16	181
17	Enter the tax on the amount on line 4 based on the <b>child's</b> filing status (see instructions). If the Qualified Dividends and Capital Gain Tax Worksheet, Schedule D Tax Worksheet, or Schedule J (Form 1040) is used to figure the tax, check here <input checked="" type="checkbox"/>	17	164
18	Enter the <b>larger</b> of line 16 or line 17 here and on the <b>child's</b> Form 1040, line 44; Form 1040A, line 28; or Form 1040NR, line 41. If the child files Form 2555 or 2555-EZ, see the instructions	18	181

**Filled-in Qualified Dividends and Capital Gain Tax Worksheet #1**

<b>Before you begin:</b> ✓ Be sure you do not have to file Form 1040 (see the instructions for Form 1040A, line 10)	
1. Enter the amount from Form 1040A, line 27	1. 49,100*
2. Enter the amount from Form 1040A, line 9b	2. 412*
3. Enter the amount from Form 1040A, line 10	3. 275*
4. Add lines 2 and 3	4. 687
5. Subtract line 4 from line 1. If zero or less, enter -0-	5. 48,413
6. Enter the <b>smaller</b> of:	
• The amount on line 1, <b>or</b>	
• \$30,650 if single or married filing separately,	}
\$61,300 if married filing jointly or qualifying widow(er), or	
\$41,050 if head of household.	
6. Enter the <b>smaller</b> of:	6. 49,100*
7. Is the amount on line 5 equal to or more than the amount on line 6?	
<input type="checkbox"/> <b>Yes.</b> Skip lines 7 through 9; go to line 10 and check the "No" box.	
<input checked="" type="checkbox"/> <b>No.</b> Enter the amount from line 5	7. 48,413
8. Subtract line 7 from line 6	8. 687
9. Multiply line 8 by 5% (.05)	9. 34
10. Are the amount on lines 4 and 8 the same?	
<input checked="" type="checkbox"/> <b>Yes.</b> Skip lines 10 through 13; go to line 14.	
<input type="checkbox"/> <b>No.</b> Enter the <b>smaller</b> of line 1 or line 4	10. _____
11. Enter the amount from line 8 (if line 8 is blank, enter -0-)	11. _____
12. Subtract line 11 from line 10	12. _____
13. Multiply line 12 by 15% (.15)	13. _____
14. Figure the tax on the amount on line 5. Use the Tax Table. Enter tax here	14. 6,509
15. Add lines 9, 13, and 14	15. 6,543
16. Figure the tax on the amount on line 1. Use the Tax Table. Enter tax here	16. 6,614
17. <b>Tax on all taxable income.</b> Enter the <b>smaller</b> of line 15 or line 16 here and on Form 1040A, line 28	17. 6,543

\* See the instructions under *Using the Qualified Dividends and Capital Gain Tax Worksheet for line 9 tax* in the Form 8615 instructions.

## Filled-in Qualified Dividends and Capital Gain Tax Worksheet #2

<b>Before you begin:</b> ✓ Be sure you do not have to file Form 1040 (see the instructions for Form 1040A, line 10)	
1. Enter the amount from Form 1040A, line 27	1. 1,400*
2. Enter the amount from Form 1040A, line 9b	2. 638*
3. Enter the amount from Form 1040A, line 10	3. 425*
4. Add lines 2 and 3	4. 1,063
5. Subtract line 4 from line 1. If zero or less, enter -0-	5. 337
6. Enter the <b>smaller</b> of: <ul style="list-style-type: none"> <li>• The amount on line 1, <b>or</b></li> <li>• \$30,650 if single or married filing separately,            \$61,300 if married filing jointly or qualifying widow(er), or            \$41,050 if head of household.</li> </ul>	6. 1,400*
7. Is the amount on line 5 equal to or more than the amount on line 6? <input type="checkbox"/> <b>Yes.</b> Skip lines 7 through 9; go to line 10 and check the "No" box. <input checked="" type="checkbox"/> <b>No.</b> Enter the amount from line 5	7. 337
8. Subtract line 7 from line 6	8. 1,063
9. Multiply line 8 by 5% (.05)	9. 53
10. Are the amount on lines 4 and 8 the same? <input checked="" type="checkbox"/> <b>Yes.</b> Skip lines 10 through 13; go to line 14. <input type="checkbox"/> <b>No.</b> Enter the <b>smaller</b> of line 1 or line 4	10. _____
11. Enter the amount from line 8 (if line 8 is blank, enter -0-)	11. _____
12. Subtract line 11 from line 10	12. _____
13. Multiply line 12 by 15% (.15)	13. _____
14. Figure the tax on the amount on line 5. Use the Tax Table. Enter tax here	14. 34*
15. Add lines 9, 13, and 14	15. 87
16. Figure the tax on the amount on line 1. Use the Tax Table. Enter tax here	16. 141*
17. <b>Tax on all taxable income.</b> Enter the <b>smaller</b> of line 15 or line 16 here and on Form 1040A, line 28	17. 87

\* See the instructions under *Using the Qualified Dividends and Capital Gain Tax Worksheet for line 15 tax* in the Form 8615 instructions.

### Filled-in Qualified Dividends and Capital Gain Tax Worksheet #3

<b>Before you begin:</b> ✓ Be sure you do not have to file Form 1040 (see the instructions for Form 1040A, line 10)	
1. Enter the amount from Form 1040A, line 27	1. <u>2,500</u>
2. Enter the amount from Form 1040A, line 9b	2. <u>1,050</u>
3. Enter the amount from Form 1040A, line 10	3. <u>700</u>
4. Add lines 2 and 3	4. <u>1,750</u>
5. Subtract line 4 from line 1. If zero or less, enter -0-	5. <u>750</u>
6. Enter the <b>smaller</b> of: <ul style="list-style-type: none"> <li>• The amount on line 1, <b>or</b></li> <li>• \$30,650 if single or married filing separately,            \$61,300 if married filing jointly or qualifying widow(er), or            \$41,050 if head of household.</li> </ul>	6. <u>2,500</u>
7. Is the amount on line 5 equal to or more than the amount on line 6? <input type="checkbox"/> <b>Yes.</b> Skip lines 7 through 9; go to line 10 and check the "No" box. <input checked="" type="checkbox"/> <b>No.</b> Enter the amount from line 5	7. <u>750</u>
8. Subtract line 7 from line 6	8. <u>1,750</u>
9. Multiply line 8 by 5% (.05)	9. <u>88</u>
10. Are the amount on lines 4 and 8 the same? <input checked="" type="checkbox"/> <b>Yes.</b> Skip lines 10 through 13; go to line 14. <input type="checkbox"/> <b>No.</b> Enter the <b>smaller</b> of line 1 or line 4	10. _____
11. Enter the amount from line 8 (if line 8 is blank, enter -0-)	11. _____
12. Subtract line 11 from line 10	12. _____
13. Multiply line 12 by 15% (.15)	13. _____
14. Figure the tax on the amount on line 5. Use the Tax Table. Enter tax here	14. <u>76</u>
15. Add lines 9, 13, and 14	15. <u>164</u>
16. Figure the tax on the amount on line 1. Use the Tax Table. Enter tax here	16. <u>251</u>
17. <b>Tax on all taxable income.</b> Enter the <b>smaller</b> of line 15 or line 16 here and on Form 1040A, line 28	17. <u>164</u>

---

# Glossary

---

The definitions in this glossary are the meanings of the terms as used in this publication. The same term used in another publication may have a slightly different meaning.

**Adjusted gross income.** Gross income (defined later) minus adjustments to income (defined next).

**Adjustments to income.** Deductions that are subtracted from gross income in figuring adjusted gross income. They include deductions for moving expenses, alimony paid, a penalty on early withdrawal of savings, and contributions to an individual retirement arrangement (IRA). Adjustments to income can be taken even if itemized deductions (defined later) are not claimed.

**Alternative minimum tax.** A tax designed to collect at least a minimum amount of tax from taxpayers who benefit from the tax laws that give special treatment to certain kinds of income and allow deductions and credits for certain kinds of expenses.

**Capital gain distribution.** An allocated amount paid to, or treated as paid to, a shareholder by a mutual fund, regulated investment company, or real estate investment trust from its net realized long-term capital gains. This amount is in addition to any ordinary dividend paid to the shareholder. You will receive a statement from the payer if this applies to you.

**Dependent.** A person, other than the taxpayer or the taxpayer's spouse, for whom an exemption (defined later) can be claimed. To be your dependent, a person must be your qualifying child or qualifying relative (both defined later). For more information, see *Exemptions for Dependents* in Publication 501.

**Earned income.** Salaries, wages, tips, professional fees, and other amounts received as pay for work actually done.

For purposes of determining a dependent's standard deduction, earned income also includes any part of a scholarship or fellowship grant that the dependent must include in his or her gross income.

For purposes of completing Form 8615, earned income also includes a taxable distribution from a qualified disability trust.

**Exemption.** An amount (\$3,300 for 2006) that can be subtracted from income in figuring how much income will be taxed. Exemptions generally are allowed for the taxpayer, the taxpayer's spouse, and dependents.

**Gross income.** All income from all sources (other than tax-exempt income) that must be included on your tax return.

**Investment income.** See *Unearned income*, later, and *Investment income defined*, earlier, under *Step 1. Figuring the Child's Net Investment Income (Form 8615, Part I)*.

**Itemized deductions.** Deductions allowed on Schedule A (Form 1040) for medical and dental expenses, taxes, interest, charitable contributions, casualty and theft losses, and miscellaneous deductions. They are subtracted from adjusted gross income in figuring taxable income. Itemized deductions cannot be claimed if the standard deduction is chosen.

**Net capital gain.** The excess of net long-term capital gain over any net short-term capital loss. For 2006, this is the smaller of the gain on line 15 or the gain on line 16 of Schedule D (Form 1040). If Schedule D is not required, net capital gain is the amount of capital gain distributions on Form 1040, line 13; Form 1040A, line 10; or Form 1040NR, line 14.

**Net investment income.** The total of all investment income (other than tax-exempt income) reduced by the sum of the following: adjustments to income related

to the investment income, plus the larger of:

1. \$850 plus itemized deductions directly connected with producing the investment income, or
2. \$1,700.

**Qualified dividends.** Dividends eligible for the lower tax rates that apply to a net capital gain. They are reported to you in box 1b of Form 1099-DIV. You report them on Form 1040 or Form 1040A, line 9b, or Form 1040NR, line 10b. For more information, see Publication 550.

**Qualifying child.** To be your dependent (defined earlier), a person must be either your qualifying child or your qualifying relative (defined next). Generally, a person is your qualifying child if that person:

- Is your child, stepchild, foster child, brother, sister, stepbrother, stepsister, or a descendant of any of them,
- Lived with you for more than half of the year,
- Did not provide more than half of his or her own support for the year, and
- Was under age 19 at the end of the year (or was under age 24 at the end of the year and a student, or was any age and permanently and totally disabled).

For details, see *Exemptions for Dependents* in Publication 501.

**Qualifying relative.** To be your dependent (defined earlier), a person must be either your qualifying child (defined earlier) or your qualifying relative. Generally, a person is your qualifying relative if that person:

- Lives with or is related to you,
- Does not have \$3,300 or more of gross (total) income,
- Is supported (generally more than 50%) by you, and

- Is neither your qualifying child nor the qualifying child of anyone else.

For details, see *Exemptions for Dependents* in Publication 501.

**Standard deduction.** An amount (based on filing status, age, and blindness) that can be subtracted from adjusted gross income in figuring taxable income. The standard deduction is not used if itemized deductions are claimed.

**Tax year.** The time period covered by a tax return. Usually this is January 1 to December 31, a calendar year, but taxpayers can elect a fiscal tax year with different beginning and ending dates.

**Taxable income.** Gross income minus any adjustments to income, any allowable exemptions, and either itemized deductions or the standard deduction.

**Unearned income.** Income other than earned income. This is investment-type income and includes interest, dividends, and capital gains. Distributions of interest, dividends, capital gains, and other unearned income from a trust are also unearned income to a beneficiary of the trust. However, for purposes of completing Form 8615, a taxable distribution from a qualified disability trust is considered earned income.

**Unrecaptured section 1250 gain.** Generally, any part of your net capital gain from selling section 1250 property (real property) that is due to depreciation. For details, see Publication 550.

**28% rate gain.** Gain from the sale of collectibles and, generally, the taxable part of your gain from the sale of qualified small business stock held more than 5 years. For details, see the instructions for Schedule D (Form 1040).

---

# How To Get Tax Help


You can get help with unresolved tax issues, order free publications and forms, ask tax questions, and get information from the IRS in several ways. By selecting the method that is best for you, you will have quick and easy access to tax help.

**Contacting your Taxpayer Advocate.** The Taxpayer Advocate Service is an independent organization within the IRS whose employees assist taxpayers who are experiencing economic harm, who are seeking help in resolving tax problems that have not been resolved through normal channels, or who believe that an IRS system or procedure is not working as it should.

You can contact the Taxpayer Advocate Service by calling toll-free 1-877-777-4778 or TTY/TDD 1-800-829-4059 to see if you are eligible for assistance. You can also call or write to your local taxpayer advocate, whose phone number and address are listed in your local telephone directory and in Publication 1546, The Taxpayer Advocate Service of the IRS - How to Get Help With Unresolved Tax Problems. You can file Form 911, Application for Taxpayer Assistance Order, or ask an IRS employee to complete it on your behalf. For more information, go to [www.irs.gov/advocate](http://www.irs.gov/advocate).

**Low income tax clinics (LITCs).** LITCs are independent organizations that provide low income taxpayers with representation in federal tax controversies with the IRS for free or for a nominal charge. The clinics also provide tax education and outreach for taxpayers with limited English proficiency or who speak English as a second language. Publication 4134, Low Income Taxpayer Clinic List, provides information on clinics in your area. It is available at [www.irs.gov](http://www.irs.gov) or at your local IRS office.

**Free tax services.** To find out what services are available, get Publication 910, IRS Guide to Free Tax Services. It contains a list of free tax publications and describes other free tax information services, including tax education and assistance programs and a list of TeleTax topics.

 **Internet.** You can access the IRS website at [www.irs.gov](http://www.irs.gov) 24 hours a day, 7 days a week to:

- *E-file* your return. Find out about commercial tax preparation and *e-file* services

available free to eligible taxpayers.

- Check the status of your 2006 refund. Click on *Where's My Refund*. Wait at least 6 weeks from the date you filed your return (3 weeks if you filed electronically). Have your 2006 tax return available because you will need to know your social security number, your filing status, and the exact whole dollar amount of your refund.
- Download forms, instructions, and publications.
- Order IRS products online.
- Research your tax questions online.
- Search publications online by topic or keyword.
- View Internal Revenue Bulletins (IRBs) published in the last few years.
- Figure your withholding allowances using our withholding calculator.
- Sign up to receive local and national tax news by email.
- Get information on starting and operating a small business.



**Phone.** Many services are available by phone.

- *Ordering forms, instructions, and publications.* Call 1-800-829-3676 to order current-year forms, instructions, and publications, and prior-year forms and instructions. You should receive your order within 10 days.
- *Asking tax questions.* Call the IRS with your tax questions at 1-800-829-1040.
- *Solving problems.* You can get face-to-face help solving tax problems every business day in IRS Taxpayer Assistance Centers. An employee can explain IRS letters, request adjustments to your account, or help you set up a payment plan. Call your local Taxpayer Assistance Center for an appointment. To find the number, go to [www.irs.gov/localcontacts](http://www.irs.gov/localcontacts) or look in the phone book under *United States Government, Internal Revenue Service*.
- *TTY/TDD equipment.* If you have access to TTY/TDD equipment, call 1-800-829-4059 to ask tax questions or to order forms and publications.

- *TeleTax topics.* Call 1-800-829-4477 to listen to pre-recorded messages covering various tax topics.
- *Refund information.* To check the status of your 2006 refund, call 1-800-829-4477 and press 1 for automated refund information or call 1-800-829-1954. Be sure to wait at least 6 weeks from the date you filed your return (3 weeks if you filed electronically). Have your 2006 tax return available because you will need to know your social security number, your filing status, and the exact whole dollar amount of your refund.

**Evaluating the quality of our telephone services.** To ensure IRS representatives give accurate, courteous, and professional answers, we use several methods to evaluate the quality of our telephone services. One method is for a second IRS representative to listen in on or record random telephone calls. Another is to ask some callers to complete a short survey at the end of the call.



**Walk-in.** Many products and services are available on a walk-in basis.

- *Products.* You can walk in to many post offices, libraries, and IRS offices to pick up certain forms, instructions, and publications. Some IRS offices, libraries, grocery stores, copy centers, city and county government offices, credit unions, and office supply stores have a collection of products available to print from a CD-ROM or photocopy from reproducible proofs. Also, some IRS offices and libraries have the Internal Revenue Code, regulations, Internal Revenue Bulletins, and Cumulative Bulletins available for research purposes.
- *Services.* You can walk in to your local Taxpayer Assistance Center every business day for personal, face-to-face tax help. An employee can explain IRS letters, request adjustments to your tax account, or help you set up a payment plan. If you need to resolve a tax problem, have questions about how the tax law applies to your individual tax return, or you're more

comfortable talking with someone in person, visit your local Taxpayer Assistance Center where you can spread out your records and talk with an IRS representative face-to-face. No appointment is necessary, but if you prefer, you can call your local Center and leave a message requesting an appointment to resolve a tax account issue. A representative will call you back within 2 business days to schedule an in-person appointment at your convenience. To find the number, go to [www.irs.gov/localcontacts](http://www.irs.gov/localcontacts) or look in the phone book under *United States Government, Internal Revenue Service*.



**Mail.** You can send your order for forms, instructions, and publications to the address below. You should receive a response within 10 business days after your request is received.

National Distribution Center  
P.O. Box 8903  
Bloomington, IL 61702-8903



**CD for tax products.** You can order Publication 1796, IRS Tax Products CD, and obtain:

- A CD that is released twice so you have the latest products. The first release ships in late December and the final release ships in late February.
- Current-year forms, instructions, and publications.
- Prior-year forms, instructions, and publications.
- Bonus: Historical Tax Products DVD - Ships with the final release.
- Tax Map: an electronic research tool and finding aid.
- Tax law frequently asked questions.
- Tax Topics from the IRS telephone response system.
- Fill-in, print, and save features for most tax forms.
- Internal Revenue Bulletins.
- Toll-free and email technical support.

Buy the CD from National Technical Information Service (NTIS) at [www.irs.gov/cdorders](http://www.irs.gov/cdorders) for \$35 (no handling fee) or call 1 - 8 7 7 - C D F O R M S (1-877-233-6767) toll free to buy



the CD for \$35 (plus a \$5 handling fee). Price is subject to change.



**CD for small businesses.** Publication 3207, The Small Business Resource Guide CD for 2006, is a must for every small business owner or any taxpayer about to start a business. This year's CD includes:

- Helpful information, such as how to prepare a business

plan, find financing for your business, and much more.

- All the business tax forms, instructions, and publications needed to successfully manage a business.
- Tax law changes for 2006.
- Tax Map: an electronic research tool and finding aid.
- Web links to various government agencies, business associations, and IRS organizations.
- “Rate the Product” survey—your opportunity to suggest changes for future editions.
- A site map of the CD to help you navigate the pages of the CD with ease.
- An interactive “Teens in Biz” module that gives practical tips for teens about starting their own business, creating a business plan, and filing taxes.

An updated version of this CD is available each year in early April. You can get a free copy by calling 1-800-829-3676 or by visiting [www.irs.gov/smallbiz](http://www.irs.gov/smallbiz).



**28% rate gain** ..... 8, 14  
 Defined ..... 23

**A**

**Adjusted gross income (AGI):**  
 Defined ..... 23  
**Adjustments to income** ..... 11  
 Defined ..... 23  
**Age 65 or older dependents** ..... 3  
 Filing requirement worksheet for ..... 3

**Aliens:**  
 Individual taxpayer identification number (ITIN) ..... 2

**Alternative minimum tax (AMT)** ..... 1, 4, 7, 16  
 Defined ..... 23

**Assistance** (See Tax help)

**B**

**Blind dependents:**  
 Filing requirement worksheet for ..... 3

**C**

**Capital gain distributions** ..... 8  
 Defined ..... 23  
**Capital losses** ..... 11  
**Child's earnings** ..... 4  
**Child's expenses** ..... 5  
**Child's investment income:**  
 Tax on ..... 6-22  
 What's new ..... 1

**Child's return:**  
 Responsibility for ..... 4-5  
**Child, qualifying** ..... 23

**Comments on publication** ..... 2

**Credits:**  
 Reduced ..... 7

**D**

**Deductible investment interest** ..... 7  
**Deductions** ..... 7  
 Reduced ..... 7

**Dependents:**  
 Defined ..... 23  
 Exemption for ..... 5  
 Own exemption ..... 5  
 Social security numbers (SSNs) of ..... 2

**Divorced parents:**  
 Reporting child's investment income ..... 6

**E**

**Earned income** ..... 3  
 Defined ..... 23  
**Election to include child's income on parent's return:**  
 Child's unearned income ..... 3  
 Choosing to make election (Figure 1) ..... 8

Investment income ..... 6-10  
 Making the election and its effect ..... 7

**Estimated tax:**  
 Penalty for underpayment ..... 8

**Exemption:**  
 Defined ..... 23  
 Own exemption — dependent ..... 5

**Exemption from withholding** ..... 6  
**Extension of time to file** ..... 11

**F**

**Figures** (See Tables and figures)  
**Figuring child's income** ..... 8  
**Filing requirements** ..... 1, 3-4  
 2006, for dependents (Table 1) ..... 3  
 Age 65 or older dependents ..... 3  
 Blind dependents ..... 3  
 Filing even if not required ..... 4  
 Most dependents ..... 3

**Filing requirements-other:**  
 Advance earned income credit payments ..... 4  
 Self-employed persons ..... 4  
 Spouse itemizes ..... 4  
 Wages from church or qualified church-controlled organizations ..... 4

**Foreign earned income exclusion** ..... 1

**Form 1040:**  
 Schedule A ..... 12  
 Schedule D ..... 14, 15  
 Schedule J ..... 14, 15

**Form 1040A:**  
 Filled in example ..... 17

**Form 1099-DIV** ..... 8  
**Form 2555** ..... 12  
**Form 2555-EZ** ..... 12

**Form 2848** ..... 4, 11  
**Form 4952** ..... 14

**Form 6251** ..... 7, 16  
**Form 8615** ..... 10-16

Alternate worksheet for ..... 11  
 Determining whether Form 8615 is required (Figure 2) ..... 11  
 Figuring child's tax ..... 15-16  
 Figuring parent's tentative tax ..... 13-15  
 Filled in example ..... 19  
 Illustrated Part I of ..... 11  
 Illustrated Part II of ..... 13

**Form 8814** ..... 7, 8, 10  
**Form W-4:**  
 Exemption from withholding ..... 6

**Free tax services** ..... 24

**G**

**Gross income:**  
 Defined ..... 23

**H**

**Help** (See Tax help)

**I**

**Individual taxpayer identification numbers (ITINs)** ..... 2

**Investment income:**  
 Defined ..... 11, 23  
 Election to include on parent's return (See Election to include child's income on parent's return)  
 Figuring child's tax ..... 15-16

**IRS notice sent to child** ..... 4

**Itemized deductions:**  
 Defined ..... 23  
 Directly connected ..... 12

**J**

**Joint returns:**  
 Parents' return used to report child's investment income ..... 6

**L**

**Limit on exemption amount** ..... 16

**M**

**Married taxpayers filing separately:**  
 Reporting child's investment income ..... 6  
**Missing children, photographs of** ..... 2  
**More information** (See Tax help)

**N**

**Net capital gain** ..... 13  
 Defined ..... 23  
**Net investment income** ..... 12  
 Defined ..... 23

**P**

**Parents:**  
 Divorced ..... 6  
 Election (See Election to include child's income on parent's return)  
 Never married ..... 6  
 Not living together ..... 6  
 Remarried ..... 6  
 Separated ..... 6

**Penalties:**  
 Estimated tax underpayment ..... 8

**Publications** (See Tax help)

**Q**

**Qualified dividends** ..... 8, 13  
 Defined ..... 23  
**Qualifying child** ..... 23  
**Qualifying relative** ..... 23

**R**

**Recapture taxes** ..... 4  
**Relative, qualifying** ..... 23

**Remarried custodial parent:**  
 Reporting child's investment income ..... 6

**Remarried widowed parent:**  
 Reporting child's investment income ..... 6

**Reporting child's investment income:**  
 Joint return not filed by parents ..... 6  
 Joint returns ..... 6  
 Married filing separately ..... 6  
 Parents divorced ..... 6  
 Parents never married ..... 6  
 Remarried custodial parent ..... 6  
 Which parent's return ..... 6

**Returns:**  
 Filing even if not required ..... 4  
 Parent's election to include child's income (See Election to include child's income on parent's return)  
 Responsibility for child's return ..... 4-5  
 Signing child's return ..... 4

**S**

**Schedule D Tax Worksheet** ..... 14

**Section 1202 gain** ..... 8

**Separated parents:**  
 Reporting child's investment income ..... 6

**Signing child's return** ..... 4

**Social security numbers (SSNs) of dependents** ..... 2

**Standard deduction** ..... 1, 5  
 Defined ..... 23  
 Worksheet for dependents (Table 2) ..... 5  
 Zero ..... 5

**Suggestions for publication** ..... 2

**T**

**Tables and figures:**  
 Determining whether Form 8615 is required (Figure 2) ..... 11  
 Election to include child's income on parent's return (Figure 1) ..... 8  
 Filing requirements for dependents (Table 1) ..... 3  
 Standard deduction worksheet for dependents (Table 2) ..... 5

**Tax help** ..... 11, 24

**Tax on child's investment income** ..... 6-23  
 More than \$1,700 ..... 10-22

**Tax year:**  
 Defined ..... 23

